

BOARD OF SUPERVISORS MEETING

Meeting Notice

Tama County Board of Supervisors

Mon., Dec. 1, 2025

Meetings may also be available online for viewing and/or participating in by clicking the below link barring no power, internet, or equipment failure or other unforeseen circumstances. Meetings will still be held if there is no electronic availability.

[Click here to join meeting](#)

Agenda Schedule

** Agenda is not printed in any particular order, only time specific items will be addressed at certain times

8:30AM

Call to Order, Pledge of Allegiance

Approve agenda

Public comments-This time is set aside for public comments on County business topics. To be recognized raise your hand or stand. After recognition by the Chair, state your name and address. You may speak one time per issue. If the comment is for an item not on the agenda, please understand the Board of Supervisors will not act on your comments at this meeting due to the Open Meetings Law requirements but may do so at a future board meeting by placing it on the agenda. The Chair and Board members welcome comments from the public; however, all comments must be directed to the board and not others in attendance; keep your comments germane; it is not appropriate to use profane, obscene, or slanderous language. No personal attacks will be allowed. The Chair may limit each speaker to three minutes.

Discuss/Approve 11/24/25 regular minutes & 11/25/25 special minutes

Discussion/possible action on tax abatement for Roger Bradley

Engineer-road projects report

Discussion/possible action on Resolution 12-1-2025A Contract Acceptance

Discussion/possible action to approve Final Plans for BRS-C086(118)--60-86 for the culvert replacement on E44

Discussion/possible action to approve Final Plans for BROS-C086(120)--8J-86 for the bridge replacement on I Ave

Discussion/possible action on Eastern Iowa Workforce Development Area Chief Elected Officials Shared Liability Agreement

Discussion/approve claims

Public comments

New Business:

Discussion/possible action: Supervisor reports

Adjourn

Board of Supervisors Minutes
November 24, 2025

The Tama County Board of Supervisors met at 8:30 a.m. November 24, 2025. Present: 1st District Supervisor, Curt Hilmer; 2nd District Supervisor, David Turner; 3rd District Supervisor, Heather Knebel; 4th District Supervisor, Mark Doland and 5th District Supervisor, Curt Kupka. Also, Tama County Auditor, Karen Rohrs, and members of the public.

The Pledge of Allegiance was recited.

Motion by Turner, seconded by Kupka to approve the agenda. Discussion: None. All voted aye. Motion carried.

Public Comments: Public comments were heard from Karen Murty. Public comment time closed at 8:34 am.

Motion by Knebel, seconded by Hilmer to approve the minutes of the November 17th regular meeting and November 18th special meeting. Discussion: None. All voted aye. Motion carried.

The Board met with Ben Daleske, Tama County Engineer, to get a road projects report. The Board discussed releasing the roads in the Salt Creek Phase 1 project. Daleske gave an update on the roads in the SCW I area. Motion by Kupka, seconded by Turner that once the SCW I project is complete and after looking at the roads in SCW I that it will come back to the full board to accept or deny releasing the roads. Discussion: None. All voted aye. Motion carried.

Supervisor Kupka and Supervisor Hilmer from the Secondary Roads Committee did not have an update to give.

The Board held discussion regarding a Closed Session Checklist that was provided by IPIB (Iowa Public Information Board). Motion by Hilmer, seconded by Knebel to approve the Closed Session Checklist. Discussion: Turner stated that nothing is in the code saying that a checklist is needed. He stated that Tama County is setting the standard for the rest of the state. All voted aye. Motion carried.

Motion by Hilmer, seconded by Turner to approve Resolution 11-24-2025A Approving Informal Resolution for Iowa Public Information Board Case No. 25FC:0018 and to authorize the chairman to sign 25FC:0018 Informal Resolution. Discussion: Turner read aloud Resolution 11-24-2025A. Knebel read aloud 25FC:0018 Informal Resolution.

RESOLUTION 11-24-2025A

A RESOLUTION APPROVING INFORMAL RESOLUTION FOR IOWA PUBLIC INFORMATION BOARD CASE NO. 25FC:0018

WHEREAS, Tama County is a party to Tammy Wise v. Tama County Board of Supervisors, Case No. 25FC:0018 before the Iowa Public Information Board;

WHEREAS, Tama County wishes to resolve Iowa Public Information Board Case No. 25FC:0018;

WHEREAS, the Tama County Board of Supervisors adopted a Closed Session Checklist policy on November 24, 2025;

WHEREAS, in resolution of Iowa Public Information Board Case No. 25FC:0018, the Tama County Board of Supervisors adopts a revised Closed Session Checklist policy (attached) with this Resolution that includes the requirement that the Board receive the employee's permission in writing or in open session prior to going into closed session pursuant to Iowa Code section 21.5(1)(i);

WHEREAS, Iowa Public Information Board Case No. 25FC:0018, the Tama County Board of Supervisors will complete a training related to open meetings and public records on December 8, 2025 with the Iowa Public Information Board;

WHEREAS, the Tama County Board of Supervisors formally approves the attached Informal Resolution for Iowa Public Information Board Case No. 25FC:0018 (attached), and a copy of the Informal Resolution shall be included with the meeting minutes;

WHEREAS, the Board of Supervisors shall read the terms of the Informal Resolution into the November 24, 2025 meeting record upon approval of this Resolution;

WHEREAS, the Tama County Auditor shall provide the Iowa Public Information Board Executive Director with a copy of the minutes and the included Informal Resolution following the approval of the meeting minutes;

THEREFORE, BE IT RESOLVED by the Tama County, Iowa Board of Supervisors, that the attached Informal Resolution for Iowa Public Information Board Case No. 25FC:0018 is adopted by Tama County and that the Tama County Board of Supervisors and Tama County shall comply with the terms of the Informal Resolution as stated above.

Roll Call Vote: Hilmer, aye. Turner, aye. Knebel, aye. Doland, aye. Kupka, aye. Resolution passed and adopted this 24th day of November, 2025. Mark Doland, Chairman, Board of Supervisors. Karen Rohrs, County Auditor.

Motion by Turner, seconded by Knebel to approve setting a special meeting with Paul Greufe on 11/25/25 at 9:30 am to review and possibly approve the Tama County Employee Handbook and to discuss upcoming union negotiations. Discussion: None. All voted aye. Motion carried.

Motion by Turner, seconded by Kupka to approve the claims for payment as presented in the amount of \$140,336.33. Discussion: None. All voted aye. Motion carried.

Public Comments: Public comments were heard from Carolyn Adolphs, Jack Cooper, and Karen Murty. Public comment time closed at 9:21 am.

New Business:

Supervisor Turner updated the board on the new phone system the county is in the process of acquiring.

Motion by Knebel, seconded by Turner to adjourn the meeting. All voted aye. Motion carried. Chairman Doland adjourned the meeting at 9:24 am.

These minutes are intended to provide a summary of the discussions and decisions made during the Board of Supervisor meeting. For the most accurate and comprehensive record, please refer to the audio recording of the meeting that can be provided upon request at the auditor's office.

Board of Supervisors Minutes
November 25, 2025

The Tama County Board of Supervisors met at 9:30 a.m. November 25, 2025. Present: 1st District Supervisor, Curt Hilmer; 2nd District Supervisor, David Turner; 3rd District Supervisor, Heather Knebel; 4th District Supervisor, Mark Doland and 5th District Supervisor, Curt Kupka. Also, Tama County Auditor, Karen Rohrs, and members of the public.

The Pledge of Allegiance was recited.

Motion by Turner, seconded by Kupka to approve the agenda. Discussion: None. All voted aye. Motion carried.

Paul Greufe, HR Consultant, presented the updated 2025 Employee Handbook.

The Board held discussion regarding the FY27 budget process to give guidance to elected officials and department heads. Motion by Turner, seconded by Kupka to approve for the FY27 budget process the Board is going to take the amount of taxes that they are expected to levy for and the percentage of department budgets from the past to determine the maximum amount of money to be appropriated to each department. Discussion: None. All voted aye. Motion carried.

Motion by Hilmer, seconded by Knebel to approve Resolution 11-25-2025A Authorizing Supervisor David Turner to act as interim IT director and approve purchases with reporting requirements. Discussion: Knebel thanked Turner for the work he has done for IT.

RESOLUTION 11-25-2025A

**A RESOLUTION AUTHORIZING SUPERVISOR DAVID TURNER TO ACT AS
INTERIM IT DIRECTOR AND APPROVE PURCHASES WITH REPORTING
REQUIREMENTS**

WHEREAS, the Tama County Board of Supervisors recognizes the need for continuity in IT operations and oversight during the interim period without a permanent IT Director;

WHEREAS, Supervisor David Turner has agreed to serve as Interim IT Director to ensure the maintenance and improvement of county technology infrastructure;

WHEREAS, the Board desires to grant limited purchasing authority to Supervisor Turner while maintaining transparency and accountability in the use of public funds;

NOW, THEREFORE, BE IT RESOLVED BY THE TAMA COUNTY BOARD OF SUPERVISORS:

Authority Granted: Supervisor David Turner is authorized to make IT-related purchases necessary for county operations, including hardware, software, licensing, maintenance agreements, and related services.

Spending Cap: Supervisor Turner may approve and execute purchases up to \$10,000 per transaction without prior Board approval. Any purchase exceeding \$10,000 requires Board review and approval before execution.

Compliance: All purchases shall comply with Iowa Code Chapter 26 and Tama County procurement policies.

Reporting Requirements: Supervisor Turner shall provide a monthly written report to the Board of Supervisors, including: Beginning IT fund balance, Itemized expenditures for the reporting period, Ending fund balance, Forecasted expenses for the upcoming month or quarter. Reports shall be submitted at the first regular Board meeting of each month and entered into the official minutes.

Duration: This resolution remains in effect until the Board appoints a permanent IT Director or rescinds this authorization.

Roll Call Vote: Hilmer, aye. Turner, aye. Knebel, aye. Doland, aye. Kupka, aye. Resolution passed and adopted this 25th day of November, 2025. Mark Doland, Chairman, Board of Supervisors. Karen Rohrs, County Auditor.

Motion by Knebel, seconded by Turner to approve the Tama County Eyewear Reimbursement Policy with an amendment on 6.2 to say 30 days and to approve Tama County Eyewear Reimbursement Form. Discussion: None. All voted aye. Motion carried.

Motion by Kupka, seconded by Knebel to approve the Tama County Credit Card Policy and Tama County Credit Card User Agreement. Discussion: Doland stated he wished that the county could do away with credit cards all together except for the Auditor's office and allow the Auditor's office to make purchases for everyone, but that is not feasible. This policy is to give more oversight and to make sure everyone is using them for their intended purposes. Knebel thanked Paul Greufe for working on the policies. Kupka amended his motion to approve the policies with a change to 5.1 that strikes out Meal expenses when overnight travel is required and 5.2 second bullet from the bottom should say any meal for any travel, seconded by Knebel. All voted aye to approve the amendment. All voted aye for the original motion. Motions carried.

Doland explained why the appreciation policy was created. Motion by Knebel, seconded by Turner to approve the County Employee Appreciation Expenditure Policy for a once a year recognition with a cap of \$40 per employee. Discussion: None. All voted aye. Motion carried.

Public Comments: There was no public present to give comments. Public comment time closed at 11:39 am.

New Business: Kupka asked the Board if they had reviewed the email he had sent regarding a tractor for secondary roads to pull the scrapers/groomer and what their opinions were. Motion by Doland, seconded by Hilmer to give direction to Ben to look into purchasing a used tractor for dual purposes. Discussion: None. All voted aye. Motion carried.

Motion by Hilmer, seconded by Turner to adjourn the meeting. All voted aye. Motion carried. Chairman Doland adjourned the meeting at 11:44 am.

These minutes are intended to provide a summary of the discussions and decisions made during the Board of Supervisor meeting. For the most accurate and comprehensive record, please refer to the audio recording of the meeting that can be provided upon request at the auditor's office.



Tama County, IA - Treasurer
104 W. State Street
P.O. Box 336
Toledo, IA 52342
(641) 484-3141

Tax Charge Information Sheet

Amount Due if Paid By: 12/01/2025

Dec 1st @ 8.30

BRADLEY, ROGER W
911 SIEGEL ST
TAMA, IA 52339

Parcel Number: 1427404016				Situs: 911 SIEGEL					
Owner: BRADLEY, ROGER W				Legal: CENTRAL S75' LOT 5 BLK 2					
Taxes Due									
Year	Type	Bill Number	1st Half Tax	1st Half Interest	2nd Half Tax	2nd Half Interest	Additional Costs	Total Due	
2024	Tax	344480	\$2,040.00	\$61.00	\$2,040.00	\$0.00	\$0.00	\$4,141.00	
Total Taxes Due for Parcel Number 1427404016:			\$2,040.00	\$61.00	\$2,040.00	\$0.00	\$0.00	\$4,141.00	
Payments								Additional	
Payor	Date	Type	Year	Bill Number	1st Half Tax	2nd Half Tax	Interest	Costs	Total Paid
BRADLEY, ROGER W	06/03/2025	Tax	2023	321841	\$0.00	\$1,890.00	\$85.00	\$4.00	\$1,979.00
Total Payments For Parcel Number 1427404016 from 01/01/2025 through 11/19/2025:									\$1,979.00

Tax Charge Summary for 1 Parcel

Total Unpaid Charges:	
First Half Due:	\$2,101.00
Second Half Due:	\$2,040.00
Total Due:	\$4,141.00
Grand Total Unpaid:	
	\$4,141.00
Total Payment From 01/01/2025 Through 11/19/2025:	\$1,979.00

Tama County Board of Supervisors - Weekly Engineer's Office Report

December 1st, 2025

PCI Bridge on S Avenue Update

Manatt's E66 Paving Update.

Description of Storms over Thanksgiving weekend.

We had a letting on November 18th for the bridge project on 300th St. I have a resolution to sign the contract via DocExpress. Late start date is April 20th, 2026

Project	Estimate	Low Bid
BROS-7692(605)—5F-86	\$1,808,544.55	\$1,389,808.21

RESOLUTION 12-1-2025A

WHEREAS, the Board of Supervisors, hereafter referred to as “the Board”, believes the HMA Resurfacing Project: BROS-7692(605)--5F-86, hereafter referred to as “the project” is in the best interest of Tama, Iowa, and the residents thereof; and

WHEREAS, the Board has sought appropriate professional guidance for the concept and planning for the project and followed the steps as required by the Code of Iowa for notifications, hearings, and bidding/letting; and

WHEREAS, The Board finds this resolution appropriate and necessary to protect, preserve, and improve the rights, privileges, property, peace, safety, health, welfare, comfort, and convenience of Tama County and its citizens, all as provided for in and permitted by section 331.301 of the Code of Iowa; and

IT IS THEREFORE RESOLVED by Board to accept the bid from Peterson Contractors Inc. in the amount of \$1,389,808.21 and awards the associated contract(s) to the same;

BE IT FURTHER RESOLVED that all other resolutions or parts of resolutions in conflict with this resolution are hereby repealed. If any part of this resolution is adjudged invalid or unconstitutional, such adjudication shall not affect the validity of the resolution or action of The Board as a whole or any part thereof not adjudged invalid or unconstitutional. This resolution shall be in full force and effect from and after the date of its approval as provided by law; and

BE IT FURTHER RESOLVED by the Board of Supervisors of Tama County, Iowa, that after receiving the necessary contract documents, including but not limited to, the contractor’s bond and certificate of insurance, Ben Daleske PE, the County Engineer for Tama County, Iowa, be and is hereby designated, authorized, and empowered on behalf of the Board of Supervisors of said County to execute the contracts in connection with the afore awarded construction project let through the DOT for this county.

CULVERT STANDARDS	
Standard	Date Issued
TWRCB G1-20	July, 2020
TWRCB G2-20	July, 2020
TWRCB G3-20	July, 2020
TWRCB 12-7-20	July, 2020
TWPWH 0-1-20	July, 2020
TWPWH 0-2-20	July, 2020
TWPWH 0-3-20	July, 2020
TWPWH 0-4-20	July, 2020
TWPWH 0-5-20	July, 2020
TWPWH 0-6-20	July, 2020

SECTION 404 PERMIT AND CONDITIONS
CONSTRUCT THIS PROJECT ACCORDING TO REQUIREMENTS OF THE U.S. ARMY CORPS OF ENGINEERS NATIONWIDE PERMIT 14. PERMIT NUMBER: CEMVR-RD-2025-0977. NATION WIDE PERMIT 14 CONDITIONS CAN BE FOUND AT: http://www.mvr.usace.army.mil/Missions/Regulatory/Permits/ . THE U.S. ARMY CORPS OF ENGINEERS RESERVES THE RIGHT TO VISIT THE SITE WITHOUT PRIOR NOTICE.



IOWA
DEPARTMENT OF TRANSPORTATION
HIGHWAY DIVISION

PLANS OF PROPOSED IMPROVEMENT ON THE

FARM TO MARKET SYSTEM

TAMA COUNTY

RCB Culvert Replacement - Twin Box

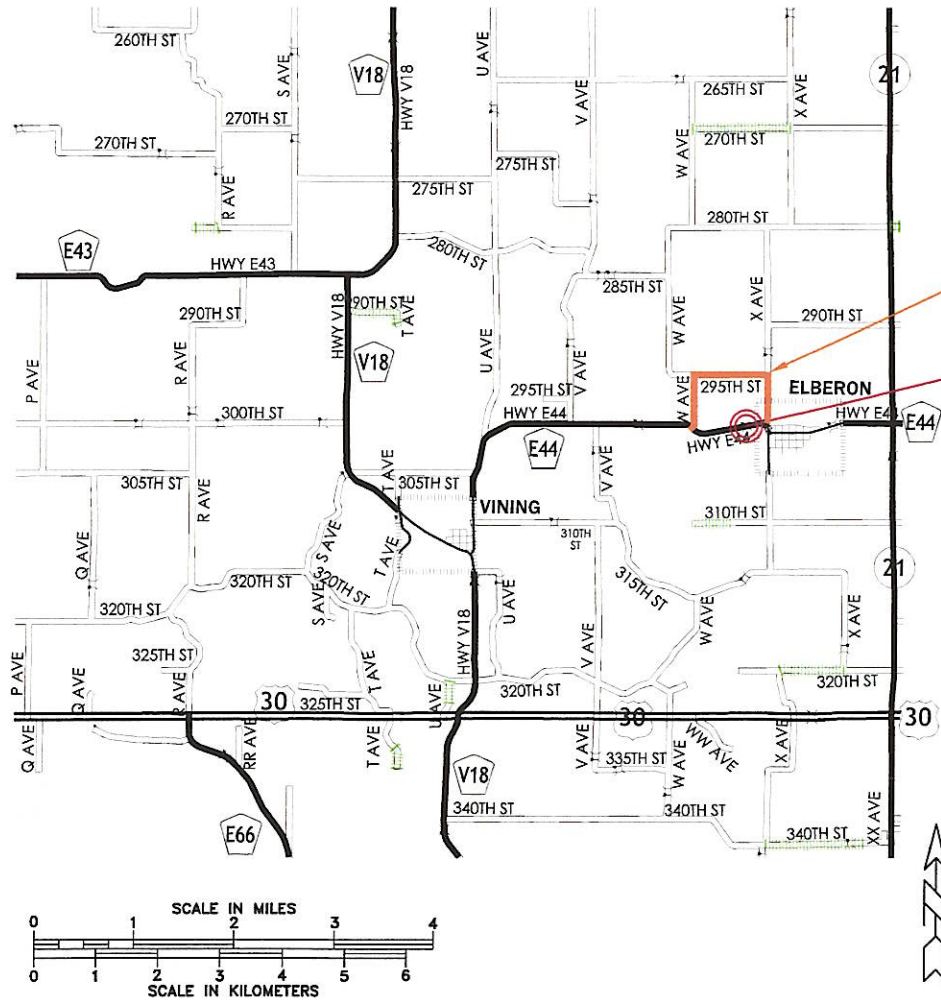
On E44, Over Troublesome Creek, S14 T83N R3W

Refer to the Proposal Form for list of applicable specifications.

Scales: As Noted

INDEX OF SHEETS		
Sheet	Description	8 sheets
A.01	TITLE SHEET	
B.01	TYPICAL SECTIONS	
B.02	R.C.B. END AND SIDE VIEW	
C.01	ESTIMATE OF QUANTITIES	
C.02	GENERAL NOTES	
C.03	MISC. TABULATIONS	
D.01	PLAN AND PROFILE	
J.01	DETOUR SHEET	

STANDARD ROAD PLANS			10-18-11
The following Standard Road Plans apply to construction work on this project			
Number	Revision Date	Title	
DR-111	4/17/2018	BOX CULVERT (BACKFILL)	
EC-201	4/20/2021	SILT FENCE	
EC-204	10/19/2021	PERIMETER, SLOPE AND DITCH CHECK SEDIMENT CONTROL DEVICES	
EW-402	4/18/2017	TEMPORARY STREAM DIVERSION	
EW-501	10/17/2023	RURAL ENTRANCE	
PM-110	10/15/2024	LINE TYPES	
TC-252	10/21/2025	ROUTES CLOSED TO TRAFFIC	



DETOUR ROUTE

Sta. 189+35.00
Construct 12' x 7' x 34' TWIN RCB (2'FILL)
FHWA #317480
County #171110



UTILITY CONTACT INFORMATION			
Company	Contact Name	Email	Phone Number
(ANE) Alliant Energy	Field Engineer	locate_IPI@alliantenergy.com	(800) 255-4268
(CTLI/A01) CenturyLink	Sadie Hull	sadie.hull@umen.com	(918) 547-0147
(ELB) City of Elberon	Jared Vogler	vanhornefire@netins.net	(319) 560-8320
(KEY) Keystone Farmers Coop	Chad Scott	cscott@keystonecommunications.com	(319) 442-3241
(PWA) Poweshiek Water Assoc.	Rick Anderson	rick@poweshiekwater.com	(641) 522-7416

I HEREBY CERTIFY THAT THIS ENGINEERING DOCUMENT WAS PREPARED BY ME OR UNDER MY DIRECT PERSONAL SUPERVISION AND THAT I AM A DULY LICENSED PROFESSIONAL ENGINEER UNDER THE LAWS OF THE STATE OF IOWA.

ALEX M. DAVIS, P.E.

DATE:

MY LICENSE RENEWAL IS DECEMBER 31, 2025.

PAGES OR SHEETS COVERED BY THIS SEAL. ALL SHEETS IN SET.

APPROVED

TAMA COUNTY ENGINEER

APPROVED

CHAIRMAN

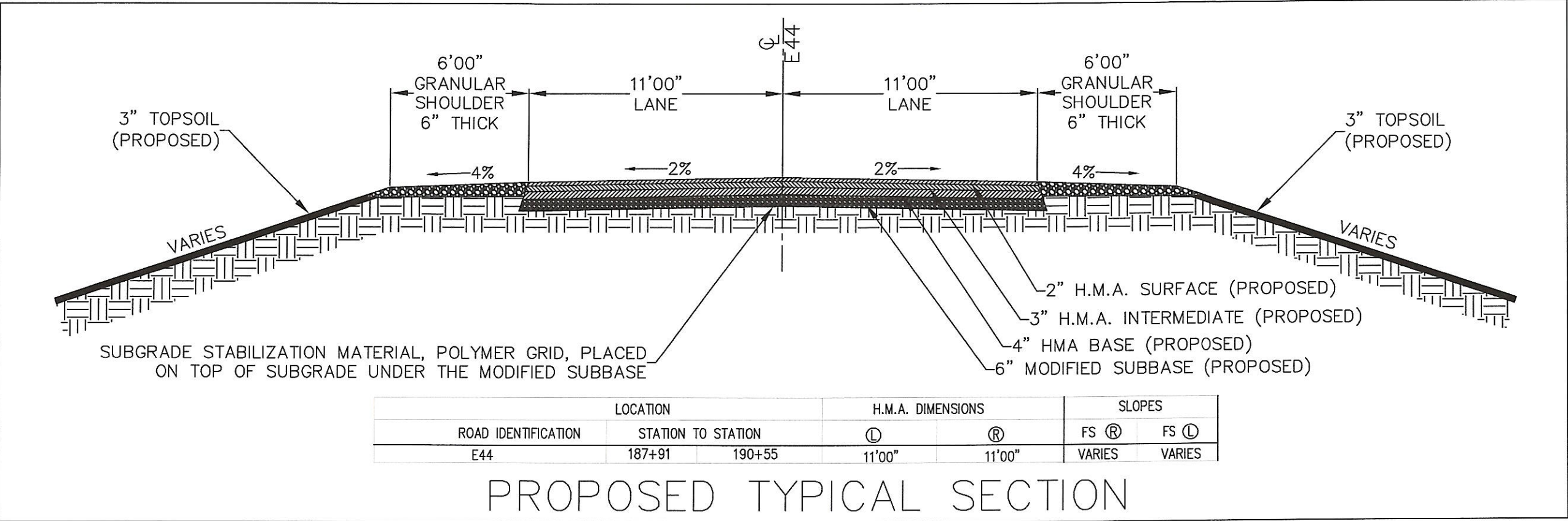
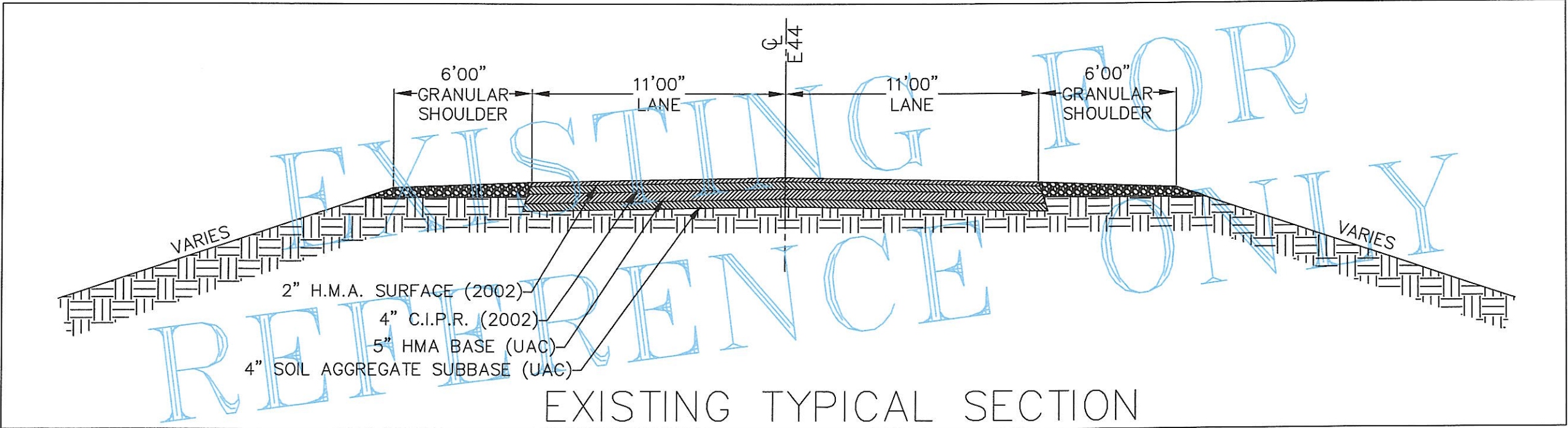
BOARD OF SUPERVISORS

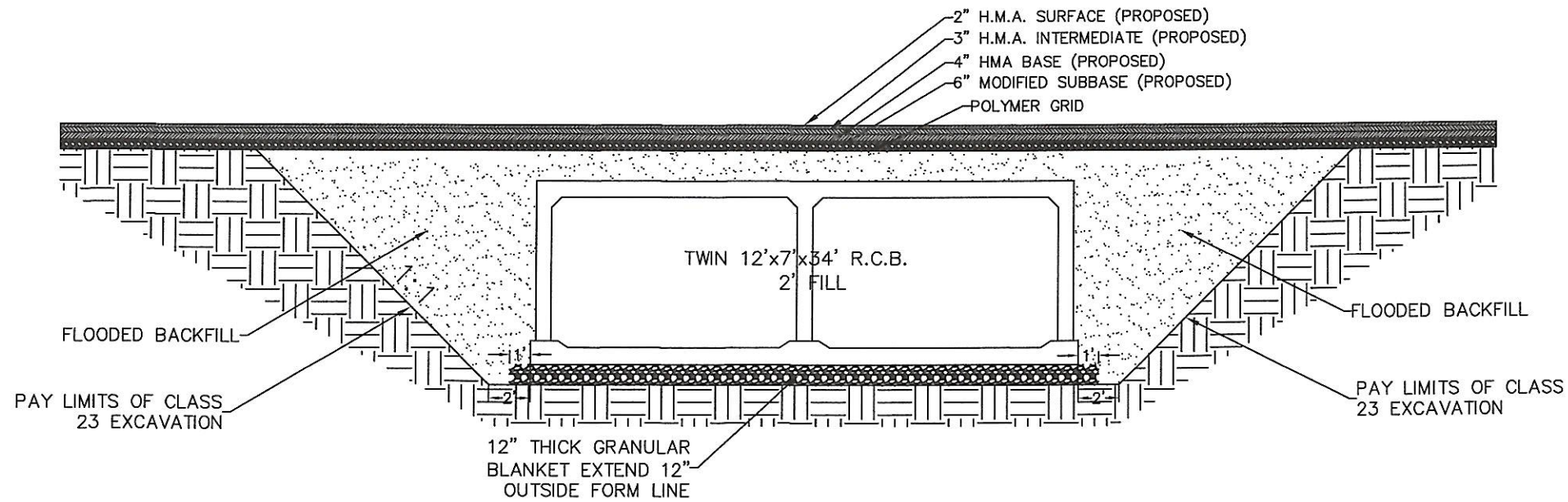
2021 TRAFFIC COUNT = 230 VPD

TAMA COUNTY

PROJECT NO. BRS-C086(118)--60-86

STATE	FISCAL	SHEET TITLE	SHEET NO.
IOWA	2026	TITLE SHEET	A.01

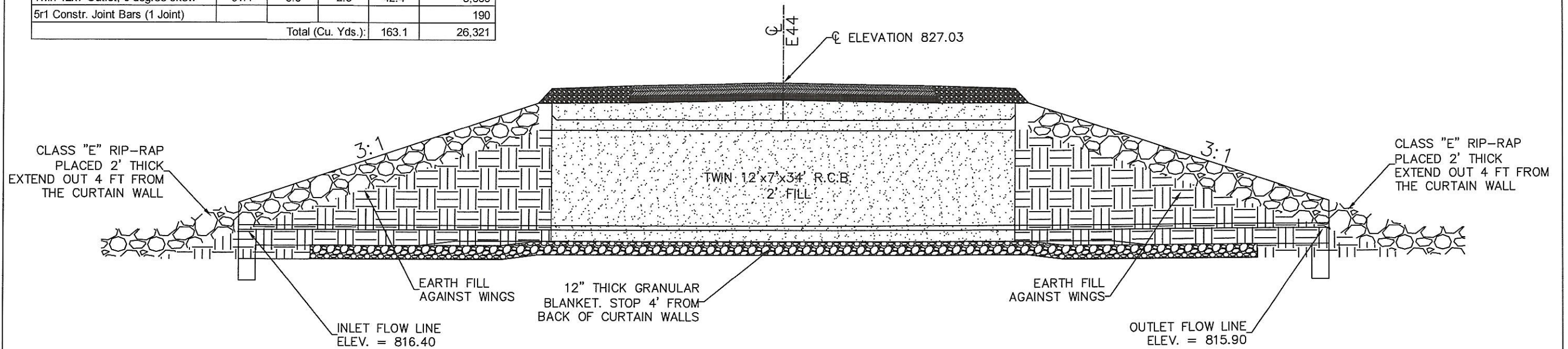




R.C.B. SECTION VIEW

NOTES;
SEE STANDARD ROAD PLAN DR-111
FOR ADDITIONAL INFORMATION

RCB Culvert Quantities (2' Fill)					
Location	Concrete CY				Rein. Steel (LB)
	Slab	Walls	Floor	Total	
Twin 12x7 Inlet, 0 degree skew	31.4	8.5	2.5	42.4	5,666
34' Barrel (fill 2')	29.5	30.1	18.7	78.3	14,799
Twin 12x7 Outlet, 0 degree skew	31.4	8.5	2.5	42.4	5,666
5r1 Constr. Joint Bars (1 Joint)					190
Total (Cu. Yds.):				163.1	26,321



R.C.B. PROFILE VIEW

ESTIMATED PROJECT QUANTITIES				
PROJECT NUMBER: BRS-C086(118)--60-86				
TWIN 12' x 7' x 34' R.C.B. 2' FILL				
REF.#	ITEM CODE	ITEM DESCRIPTION	UNIT	TOTAL
1	2101-0850001	CLEARING AND GRUBBING	ACRE	0.70
2	2102-2710070	EXCAVATION, CLASS 10 ROADWAY AND BORROW	C.Y.	75.30
3	2104-2713020	EXCAVATION, CL 13, CHANNEL	C.Y.	220.00
4	2105-8425015	TOPSOIL, STRIP, SALVAGE AND SPREAD	C.Y.	234.00
5	2113-0001100	SUBGRADE STABILIZATION MATERIAL, POLYMER GRID	S.Y.	704.00
6	2115-0100000	MODIFIED SUBBASE	C.Y.	222.00
7	2121-7425020	GRANULAR SHOULDERS, TYPE B	TON	140.00
8	2303-1031500	H.M.A. STANDARD TRAFFIC BASE COURSE, 1/2" MIX	TON	172.00
9	2303-1032500	H.M.A. STANDARD TRAFFIC INTERMEDIATE COURSE, 1/2" MIX	TON	122.00
10	2303-1033500	H.M.A. STANDARD TRAFFIC , SURFACE COURSE, 1/2" NO SPEC. FRIC.	TON	78.00
11	2303-1258283	ASPHALT BINDER, PG58-28S, STANDARD TRAFFIC	TON	23.25
12	2401-6745650	REMOVAL OF EXISTING STRUCTURES	L.S.	1.00
13	2402-0425040	FLOODED BACKFILL	C.Y.	275.00
14	2402-2723000	EXCAVATION, CLASS 23	C.Y.	372.00
15	2402-3825025	GRANULAR MATERIAL FOR BLANKET	C.Y.	74.00
16	2403-0100020	STRUCTURAL CONCRETE (RCB CULVERT)	C.Y.	163.10
17	2404-7775000	REINFORCING STEEL	LBS.	26321.00
18	2417-1040024	CULVERT, C.M.P. ENTRANCE PIPE, 24 INCH DIAMETER	L.F.	90.00
19	2418-0000010	TEMPORARY STREAM DIVERSION	EACH	1.00
20	2507-6800061	REVETMENT, CLASS "E" RIP-RAP	TON	130.00
21	2510-6745850	REMOVAL OF PAVEMENT	S.Y.	645.33
22	2524-9100030	OBJECT MARKERS, TYPE 3	EACH	4.00
23	2526-8285000	CONSTRUCTION SURVEY	L.S.	1.00
24	2527-9263209	PAINTED PAVEMENT MARKINGS, WATERBORNE/SOLVENT BASED	STA.	3.99
25	2528-2518000	SAFETY CLOSURE	EACH	4.00
26	2528-8445110	TRAFFIC CONTROL	L.S.	1.00
27	2533-4980005	MOBILIZATION	L.S.	1.00
28	2601-2634100	MULCH	ACRE	0.60
29	2601-2636043	SEEDING AND FERTILIZING (RURAL)	ACRE	0.60
30	2601-2642100	STABILIZING CROP - SEEDING AND FERTILIZING	ACRE	0.60
31	2602-0000020	SILT FENCE	L.F.	200.00
32	2602-0000312	PERIMETER AND SLOPE SEDIMENT CONTROL, 12 IN. DIA.	L.F.	500.00

ESTIMATED REFERENCE INFORMATION		
Data listed is for informational purposes only and shall not constitute a basis for any extra work orders		
NO.	ITEM CODE	DESCRIPTION
1	2101-0850001	CLEARING AND GRUBBING; INCLUDES ALL EXISTING AND PROPOSED RIGHT OF WAY. SEE SHEET D.01.
2	2102-2710070	EXCAVATION CLASS 10, ROADWAY AND BORROW; ITEM IS TO REMOVE THE DIRT AFTER THE PAVEMENT IS REMOVED DOWN TO THE BOTTOM OF THE PROPOSED MODIFIED SUBBASE. MATERIAL MAY BE USED ON THE FORESLOPES.
3	2104-2713020	EXCAVATION, CLASS 13 CHANNEL; INCLUDES CLEANING CHANNEL UPSTREAM AND DOWNSTREAM TO THE LIMITS SHOWN ON SHEET D.01 WITH POSSIBLY SOME OF THE MATERIAL TO BE USED TO BUILD OUT THE FORESLOPES. CONTRACTOR SHALL BID THAT THIS MATERIAL WILL BE HAULED OFF OF THE PROJECT AS WASTE. SOME OF THE MATERIAL MAY BE INCORPORATED INTO THE FORESLOPES WITH THE APPROVAL OF THE PROJECT ENGINEER. ITEM TO INCLUDE ALL COSTS FOR HAULING, PLACING, COMPACTING AND SHAPING OF ANY MATERIAL PLACED ON THE FORESLOPES. ANY MATERIAL HAULED OFF OF THE PROJECT SHALL NOT BE PLACED IN A FLOODWAY.
4	2105-8425015	TOPSOIL, STRIP, SALVAGE AND SPREAD; ITEM FIGURED AT 3" DEPTH.
5	2113-0001100	SUBGRADE STABILIZATION MATERIAL, POLYMER GRID; TO BE PLACED 24' WIDE ON TOP OF THE SUBGRADE AND UNDER THE MODIFIED SUBBASE.
6	2115-0100000	MODIFIED SUBBASE; TO BE PLACED 6" DEEP OVER THE POLYMER GRID/SUBGRADE/FLOODED BACKFILL. SEE SHEET B.01 FOR TYPICAL SECTION.
7	2121-7425020	GRANULAR SHOULDERS, TYPE B; SEE TYPICAL ON SHEET B.01. GRANULAR SHOULDERS SHALL BE PLACED 6" THICK.

ESTIMATED REFERENCE INFORMATION		
Data listed is for informational purposes only and shall not constitute a basis for any extra work orders		
NO.	ITEM CODE	DESCRIPTION
8	2303-1031500	H.M.A STANDARD TRAFFIC BASE. INTERMEDIATE AND SURFACE COURSE, 1/2" MIX; CONSTRUCT IN ACCORDANCE WITH SECTION 2303, 2015 STANDARD SPECIFICATIONS AND CURRENT SUPPLEMENTAL SPECIFICATIONS. DESIGN WEIGHT=145 LBS/C.F. CERTIFIED PLANT INSPECTION PER SPECIFICATION 2521 SHALL APPLY TO THIS PROJECT.
9	2303-1032500	
10	2303-1033500	
11	2303-1258283	ASPHALT BINDER, PG58-28S, STANDARD TRAFFIC; ESTIMATED AT 6.25%.
12	2401-6745650	REMOVAL OF EXISTING STRUCTURES; SEE GENERAL NOTES ON SHEET C.02 AND TABULATION BLOCK ON SHEET C.03
13	2402-0425040	FLOODED BACKFILL; REFER TO STANDARD ROAD PLAN DR-111. THE FLOODED BACKFILL TO BE PLACED UP TO THE BOTTOM OF THE MODIFIED SUBBASE. SEE TYPICAL ON SHEET B.02.
14	2402-2723000	EXCAVATION, CLASS 23; SUITABLE MATERIAL IS TO BE USED TO BUILD OUT THE FORESLOPES. ITEM TO INCLUDE ALL COSTS FOR PLACING COMPACTING AND SHAPING ANY MATERIAL PLACED IN THE GUARDRAIL BLISTERS. THE CONTRACTOR SHALL BID THAT APPROX. 50% OF THE QUANTITY WILL BE WASTED AND HAULED OFF OF THE PROJECT IF IT IS NOT SUITABLE TO BE USED IN THE GUARDRAIL BLISTERS. ANY MATERIAL HAULED OFF OF THE PROJECT SHALL NOT BE PLACED IN A FLOODWAY.
15	2402-3825025	GRANULAR MATERIAL FOR BLANKET; TO BE PLACED AT A DEPTH OF 1' AND A LIMIT OF 2' PAST THE FOOTING FORM LINE. GRANULAR MATERIAL BLANKET IS TO BE DISCONTINUED AT LEAST 4' FROM THE CURTAIN WALLS. NO ASPHALTIC MATERIALS CAN BE USED FOR THIS ITEM.
16	2403-0100020	STRUCTURAL CONCRETE (R.C.B. CULVERT); CLASS C CONCRETE TO BE USED. CERTIFIED PLANT INSPECTION IS REQUIRED.
17	2404-7775000	REINFORCING STEEL; ALL REINFORCING STEEL TO BE GRADE 60.
18	2417-1040024	CULVERT, C.M.P. ENTRANCE PIPE, 24 INCH DIAMETER; ALL C.M.P. SHALL BE REVITED, 14 GAUGE WITH STANDARD CORRUGATIONS. NO HELICALLY CORRUGATED PIPE WILL BE ALLOWED. SEE SHEET D.01 FOR LOCATIONS AND C.03 FOR TABULATION BLOCK.
19	2418-0000010	TEMPORARY STREAM DIVERSION; THE CONTRACTOR SHALL SUBMIT A STREAM DIVERSION PLAN TO THE PROJECT ENGINEER BEFORE THE START OF WORK. ANY REMOVAL OF THE GRADE IN ORDER TO DIVERT THE STREAM PAST THE CLASS 23 LIMITS SHOWN ON SHEET B.02 SHALL BE PLACED BACK AND COMPACTED USING TYPE A COMPACTION.
20	2507-6800061	REVETMENT, CLASS "E" RIP-RAP; CLASS "E" REVETMENT SHALL BE PLACED AT A UNIFORM THICKNESS OF 2' AND TO THE LIMITS SHOWN ON SHEET D.01 AND TYPICAL ON SHEET B.02.
21	2510-6745850	REMOVAL OF PAVEMENT; SEE TABULATION BLOCK ON SHEET C.03.
22	2524-9100030	OBJECT MARKER, TYPE 3; OFFSET BRACKETS WILL NOT BE REQUIRED. TO BE INSTALLED BEFORE THE ROAD IS OPEN TO TRAFFIC. THE PROJECT ENGINEER WILL COUNT THE NUMBER OF OBJECT MARKERS INSTALLED AND PAY BASED ON THAT COUNT.
23	2526-8285000	CONSTRUCTION SURVEY; SURVEY CONTROL POINTS WILL BE PROVIDED BY TAMA COUNTY.
24	2527-9263209	PAINTED PAVEMENT MARKINGS, WATERBORNE/SOLVENT BASED; SEE SHEET C.03.
25	2528-2518000	SAFETY CLOSURE; SEE SHEET C.03 FOR TABULATION BLOCK
26	2528-8445110	TRAFFIC CONTROL; A DETOUR WILL BE REQUIRED TO BE SET UP AND MAINTAINED FOR THIS PROJECT. SEE SHEET J.01 FOR DETAILS.
28	2601-2634100	MULCHING, SEEDING AND FERTILIZING (RURAL) AND STABILIZING CROP, SEEDING AND FERTILIZING; ALL AREAS DISTURBED INSIDE THE RIGHT OF WAY AND TEMPORARY CONSTRUCTION EASEMENTS TO BE SEEDED AND MULCHED AFTER CONSTRUCTION IS COMPLETED. ANY AREAS DISTURBED BEYOND THESE LIMITS SHALL BE RESEEDD BY THE CONTRACTOR AT THE CONTRACTOR'S EXPENSE.
29	2601-2636043	
30	2601-2642100	
31	2602-0000020	SILT FENCE AND PERIMETER & SLOPE SEDIMENT CONTROL DEVICE, 12 INCH DIAMETER; TO BE INSTALLED AS NEEDED DURING THE COURSE OF THE PROJECT TO PREVENT ANY SILT FROM ENTERING THE STREAM OR LEAVING THE PROJECT.
32	2602-0000312	

GENERAL NOTES AND INFORMATION
DATA LISTED BELOW IS FOR INFORMATION PUPOSES ONLY AND SHALL NOT CONSTITUTE A BASIS FOR ANY EXTRA WORK ORDERS
EXISTING STRUCTURE REMOVAL; THE EXISTING QUAD 5'x5'x26' TIMBER BOX CULVERT AT STA. 189+35 SHALL BE REMOVED ACCORDING TO SECTION 2401 OF THE STANDARD SPECIFICATIONS. ALL MATERIALS SHALL BECOME THE PROPERTY OF THE CONTRACTOR AND BE REMOVED FROM THE PROJECT.
CONTRACTOR IS TO USE DUE CAUTION IN WORKING OVER AND AROUND ALL TILE LINES. BREAKS IN ANY TILE LINE DUE TO THE CONTRACTOR'S CARELESSNESS ARE TO BE REPAIRED AT THE CONTRACTOR'S EXPENSE WITHOUT COST TO TAMA COUNTY. ANY TILE LINE BROKEN OR DISTURBED BY THE CONTRACTOR WILL BE REPLACED AS DIRECTED BY THE PROJECT ENGINEER.
FINAL CLEANUP OF THE CONSTRUCTION AREA SHALL BE IN ACCORDANCE WITH SECTION 1104.08 OF THE I.D.O.T. STANDARD SPECIFICATIONS.
A PRE CONSTRUCTION CONFERENCE WITH THE SUCCESSFUL BIDDER WILL BE HELD NOT LESS THAN THREE WEEKS BEFORE STARTING THE PROJECT.
CONTRACTOR IS TO USE DUE CAUTION WHEN WORKING AROUND R.O.W. PINS AND SURVEY CONTROL POINTS WHICH ARE MARKED WITH AN OAK HUB AND CROSSING LATHE. ANY PINS DISTURBED BY THE CONTRACTOR WILL BE REPLACED AT THE CONTRACTORS EXPENSE.
CONTRACTOR IS TO FURNISH, ERECT AND MAINTAIN ALL NECESSARY TRAFFIC CONTROL DEVICES (INCLUDING THE DETOUR) ON A 24 HOUR PER DAY, 7 DAY A WEEK BASIS DURING THE CONSTRUCTION PERIOD. THE CONTRACTOR IS TO PROVIDE A 24 HOUR CALL NUMBER FOR REPAIR OF DEFICIENCIES AFTER HOURS. CONSTRUCTION WILL BE SUSPENDED IN THE EVENT THAT ANY OF THE REQUIRED TRAFFIC CONTROL DEVICES ARE NOT LEGIBLE AND OPERATIONAL AND SHALL REMAIN SUSPENDED UNTIL SUCH DEFICIENCY IS CORRECTED.
TWO TEMPORARY CONSTRUCTION EASEMENTS HAVE BEEN OBTAINED ON THIS PROJECT. CONTRACTOR IS TO RESPECT PRIVATE PROPERTY. TAMA COUNTY WILL NOT BE HELD RESPONSIBLE FOR ANY DAMAGE TO PRIVATE PROPERTY CAUSED BY THE CONTRACTOR. ANY DAMAGE TO PRIVATE PROPERTY CAUSED BY THE CONTRACTOR SHALL BE REPAIRED TO THE SATISFACTION OF THE LANDOWNER WITH NO COST TO TAMA COUNTY. IF ANY AGREEMENTS ARE MADE BETWEEN THE CONTRACTOR AND THE LANDOWNER A COPY OF THE AGREEMENT SHALL BE PROVIDED TO TAMA COUNTY FOR THE FILE.
THE ROAD WILL BE CLOSED IN THE AREA OF THE R.C.B. FOR ALL THRU TRAFFIC WITH THE EXCEPTION THAT THE CONTRACTOR SHALL WORK WITH THE ADJOINING LANDOWNER TO PROVIDE ACCESS TO BOTH SIDES OF THE CREEK SO THEY CAN PERFORM THEIR DAY TO DAY FARMING OPERATIONS. THE LANDOWNER CONTACT WILL BE PROVIDED BY TAMA COUNTY.
THIS PROJECT WILL BE CLOSED TO ALL PEDESTRIAN TRAFFIC.
CERTIFIED PLANT INSPECTION FOR ALL H.M.A. AND P.C.C. ITEMS WILL BE REQUIRED ON THIS PROJECT.
ANY DAMAGE TO THE EXISTING PAVEMENT OUTSIDE THE PAVEMENT REMOVAL AREAS SHOWN ON SHEET D.01 SHALL BE FIXED BY THE CONTRACTOR AT NO COST TO TAMA COUNTY.

AN ASBESTOS INSPECTION WAS PERFORMED BY ALEX DAVIS ID#25–13155 ON 11/20/25.

NO ASBESTOS CONTAINING MATERIALS WERE FOUND IN THE EXISTING STRUCTURE. IF ANY SUSPECT ASBESTOS CONTAINING MATERIAL ARE UNCOVERED DURING THE COURSE OF DEMOLITION, THE PROJECT ENGINEER SHALL BE NOTIFIED.

CERTIFIED PLANT INSPECTION

CERTIFIED PLANT INSPECTION SHALL APPLY TO ALL ITEMS INVOLVING CONCRETE ON THIS PROJECT.

CERTIFIED PLANT INSPECTION

CERTIFIED PLANT INSPECTION SHALL APPLY TO ALL ITEMS INVOLVING H.M.A. ON THIS PROJECT.

REMOVAL OF EXISTING STRUCTURES		
LOCATION	DESCRIPTION	DISPOSAL
STA. 189+35	QUAD 5'x5'x26' TIMBER BOX CULVERT	CONTRACTOR
REMARKS; THE EXISTING QUAD 5'x5'x26' TIMBER BOX CULVERT SHALL BE REMOVED ACCORDING TO STANDARD SPECIFICATION 2401. ALL MATERIALS ARE TO BECOME THE PROPERTY OF THE CONTRACTOR AND SHALL BE REMOVED FROM THE PROJECT.		

TABULATION OF SAFETY CLOSURES			
Refer to Section 2518 of the Standard Specifications			
STATION	CLOSURE TYPE		REMARKS
	ROAD QTY.	HAZARD QTY.	
187+91	1	-	West End of Project
188+50	-	1	West End of Excavation
190+00	-	1	East End of Excavation
190+55	1	-	East End of Project

REMOVAL OF PAVEMENT							Remarks
Station to Station		Pavement Type	Length	Width	Area (sq. yds.)	Saw Cut* (lin. Feet)	
187+91	190+55	11" H.M.A./C.I.P.R.	264'	22'	645.33	44	ALL PAVEMENT REMOVED SHALL BECOME THE PROPERTY OF THE CONTRACTOR AND REMOVED FROM THE PROJECT. H.M.A. MAY BE THICKER IN SOME AREAS DUE TO PATCHES, NO EXTRA COMPENSATION WILL BE MADE FOR REMOVING EXTRA DEPTH PAVEMENT.
* NOT A PAY ITEM				TOTAL	645.33		

SUBGRADE STABILIZATION MATERIAL, POLYMER GRID					
Location		Length	Width	Area	Area
Station to Station		Side	FT	FT	SY
187+91.00	190+55.00	Both	264.00	24	6336
Total					704

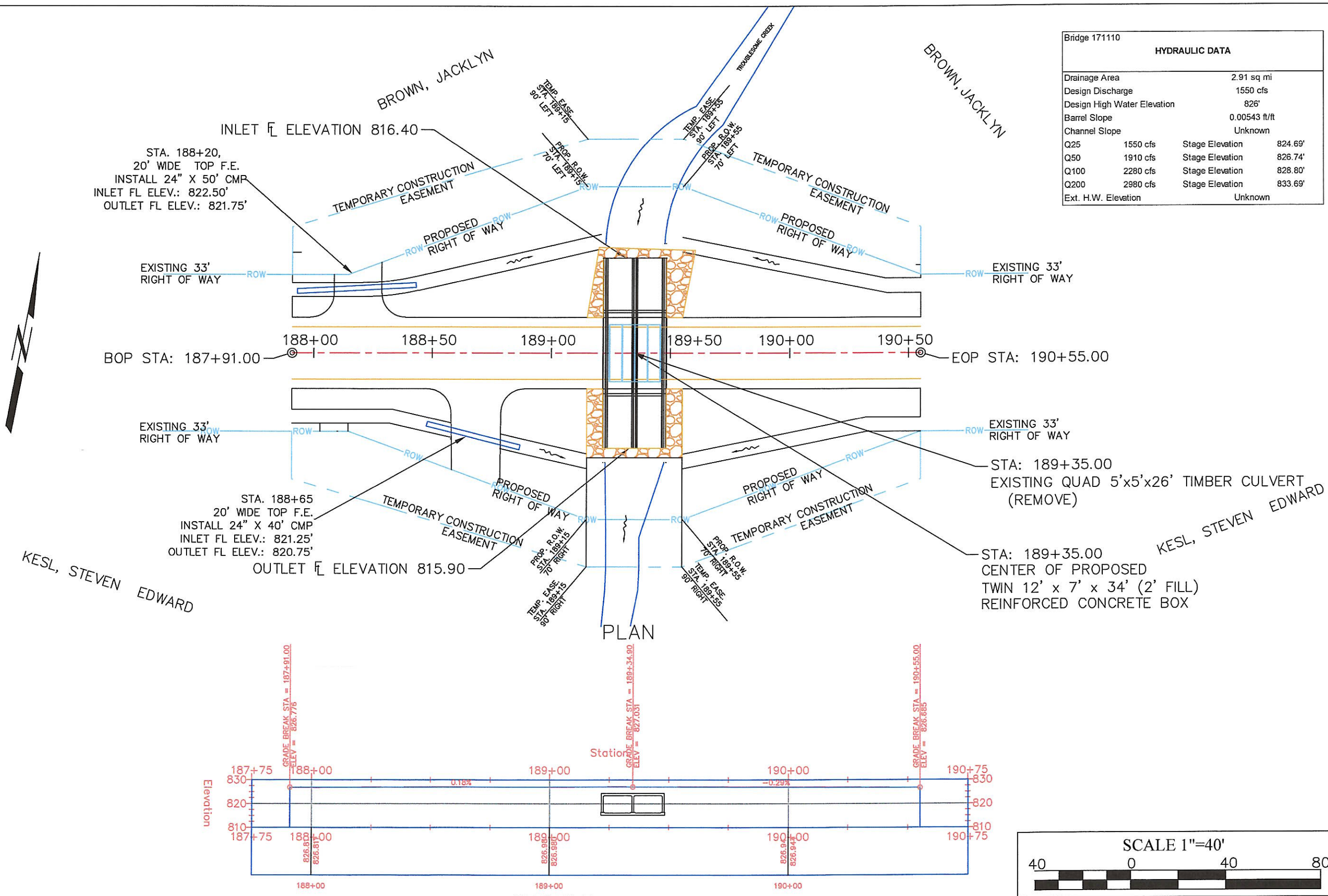
MODIFIED SUBBASE							
Based on unit weight of 140 (lb/cf)							
Location		Length	Width	Area	Depth	Volume	Quantity
Station to Station		Side	FT	FT	SF	IN	CF
187+91.00	190+55.00	Both	264.00	24	6336	6	3168
Total							222

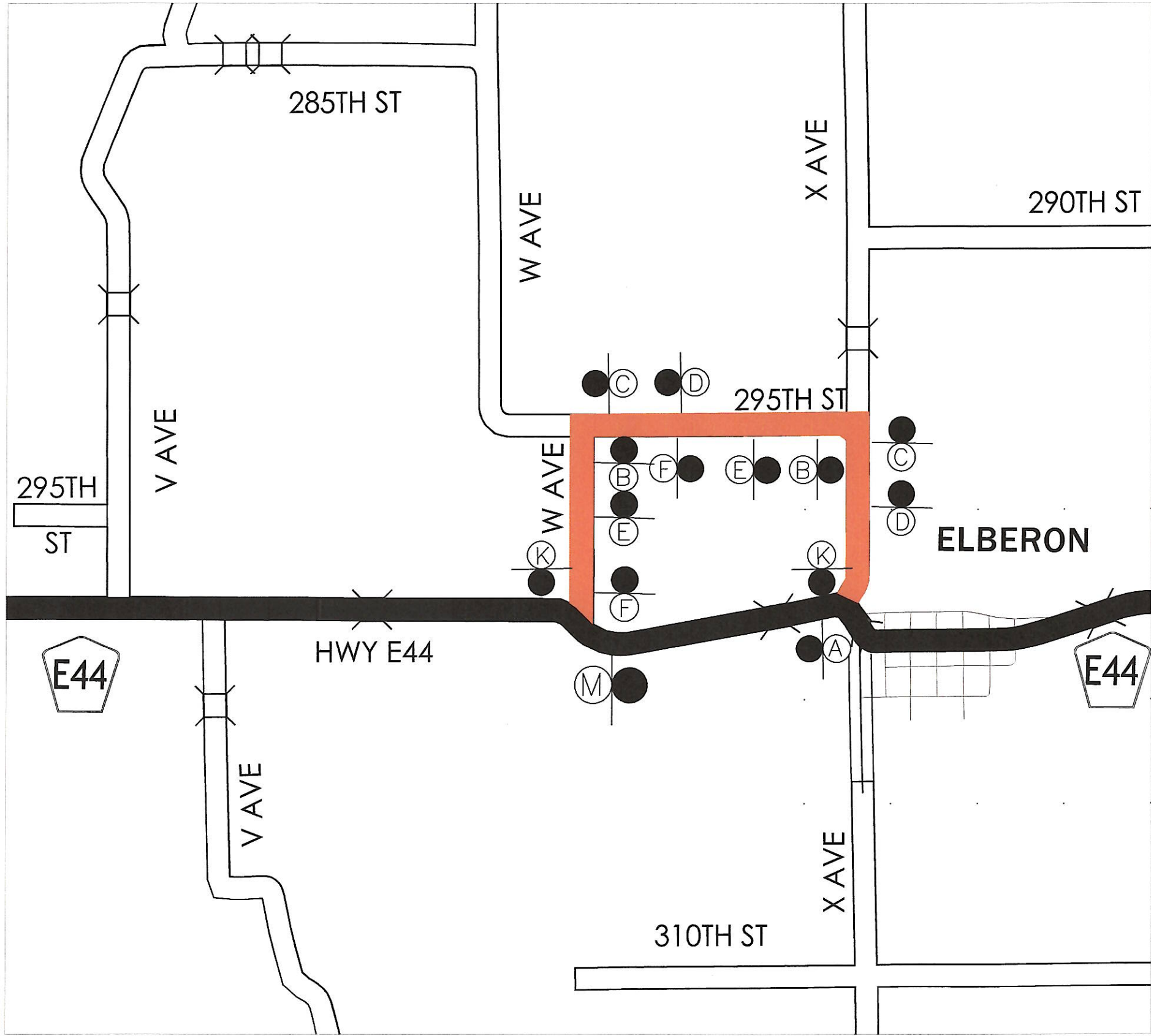
C.M.P. INFORMATION							
Inlet Station	Outlet Station	Side (Lt./Rt.)	Length (lf)	Size (inches)	Inlet Apron (Y/N)	Outlet Apron (Y/N)	Outlet Elevation
187+93	188+43	27' Lt.	40	24	N	N	822.50
188+48	188+88	34' Rt.	50	24	N	N	821.25

PAVEMENT MARKING LINETYPES													
See PM-110													
BCY4: Broken Centerline 4" (yellow) @ 0.17				NPY4: No Passing 4" (yellow) @0.84				DCY4: Double Centerline 4" (yellow) @ 1.34					
ELW4: Edgeline 4" (white) @ 0.67				DLW4: Dotted Line (white) @ 0.22				SLW2: Stop Line (white) @ 4.00					
LOCATION							Length By Line Type (Unfactored)						
Road ID	Station to Station		Direction of Travel	Marking Type	Side			BCY4	NPY4	DCY4	ELW4	DLW4	SLW2
					L	C	R						
E44	187+91	190+55	BOTH	Waterborne/Solvent Based	X	X	X	2.64	0.00	0.00	5.28	0.00	0.00
Measurement Factor								0.17	0.84	1.34	0.67	0.22	4.00
Subtotal								0.45	0.00	0.00	3.54	0.00	0.00
Total								3.99					

EXCAVATION, CLASS 10, ROADWAY AND BORROW						Remarks
Station to Station		Depth (inches)	Length (ft)	Width (ft)	C.Y.'S	
187+91	189+35	0.33	144.0	26.0	45.8	MATERIAL TO BE USED TO BUILD OUT FORESLOPES
189+62	190+55	0.33	93.0	26.0	29.6	
Total					75.3	

</





ROAD CLOSED TO THRU TRAFFIC

DETOUR

R11-4

M4-10 Right

(A)

DETOUR

E44

M4-8

M1-6

M6-1

(B)

DETOUR

E44

M4-8

M1-6

M6-1

(C)

DETOUR

E44

M4-8

M1-6

M5-1

(D)

DETOUR

E44

M4-8

M1-6

M5-1

(E)

DETOUR

E44

M4-8

M1-6

M6-1

(F)

DETOUR

E44

M4-8

M1-6

M5-2

(G)

DETOUR

E44

M4-8

M1-6

M5-2

(H)

DETOUR

E44

M4-8

M1-6

M5-2

(I)

DETOUR

E44

M4-8

M1-6

M5-2

(J)

END DETOUR

M4-8a

(K)

DETOUR AHEAD

(L)

ROAD CLOSED TO THRU TRAFFIC

DETOUR

R11-4

M4-10 Left

(M)

TAMA COUNTY BRIDGE REPLACEMENT - C.C.S.

Project Number: BROS-C086(120)--8J-86

LETTING DATE March 17, 2026

DRAWING APPROVAL

ALL SHOP DRAWINGS AND FALSE WORK DRAWINGS THAT REQUIRE APPROVAL SHALL BE APPROVED BY THE CONTRACTOR, THEN ACCEPTED BY:
ENDEAVOR CIVIL ENGINEERING INC.
P.O. Box 8
Delhi, Iowa 52223
Phone: 563-920-1175
Fax: 563-922-2566

THESE SHOP DRAWINGS SHALL NOT BE SENT TO I.D.O.T. BRIDGES AND STRUCTURES BUREAU

SECTION 404 PERMIT AND CONDITIONS

CONSTRUCT THIS PROJECT ACCORDING TO REQUIREMENTS OF THE U.S. ARMY CORPS OF ENGINEERS NATIONWIDE PERMIT 14. NATION WIDE PERMIT 14 CONDITIONS CAN BE FOUND AT:
<http://www.mvr.usace.army.mil/Missions/Regulatory/Permits/>.
THE U.S. ARMY CORPS OF ENGINEERS RESERVES THE RIGHT TO VISIT THE SITE WITHOUT PRIOR NOTICE.



WINDSTREAM COMMUNICATIONS;
Dan Hogan; 563-920-2428

T.I.P. REC; 1-800-934-7976



HIGHWAY DIVISION

PLANS OF PROPOSED IMPROVEMENT ON THE
SECONDARY ROAD SYSTEM
TAMA COUNTY
BRIDGE REPLACEMENT - C.C.S.

130'00" x 30'06" C.C.S. BRIDGE
with a 45° Lt. Ahead Skew

FHWA# 317080

Project Number: BROS-C086(120)--8J-86

ON II Ave., Over Richland Creek S21 T82 R15

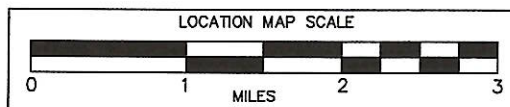
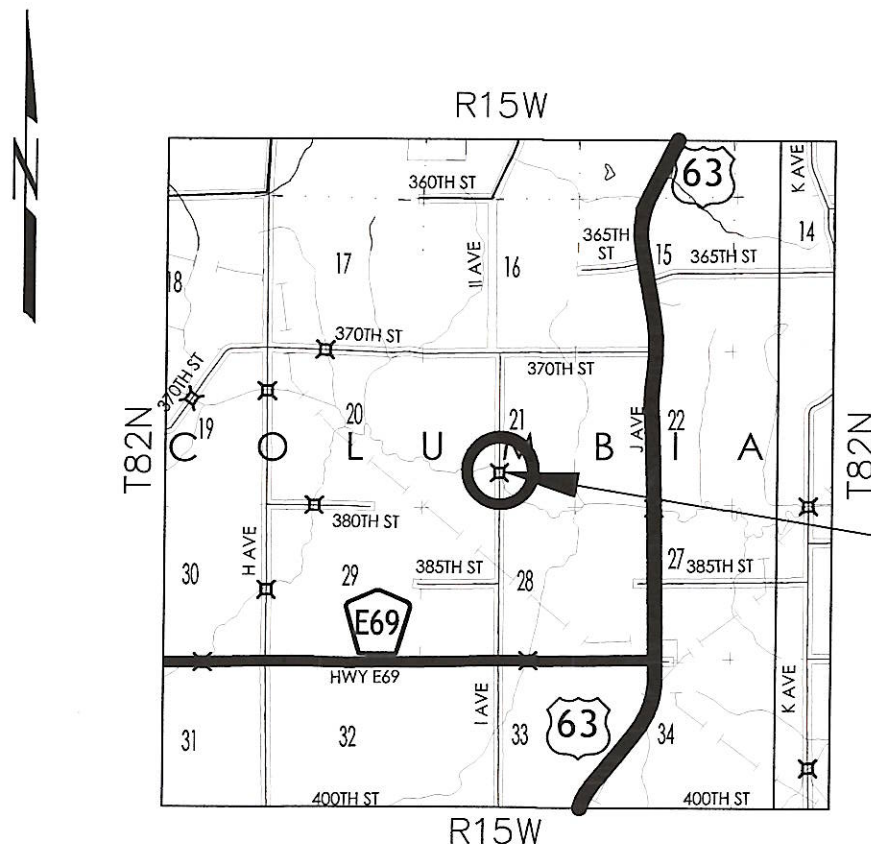
REFER TO THE PROPOSAL FORM FOR LIST OF APPLICABLE SPECIFICATIONS.

REFER TO SHEET C.02 FOR LIST OF STANDARD ROAD PLANS

TRAFFIC CONTROL PLAN:

THIS ROAD WILL BE CLOSED TO THROUGH TRAFFIC BUT OPEN TO LOCAL TRAFFIC DURING CONSTRUCTION AS PROVIDED FOR IN ARTICLE 1107.08, 2023 STANDARD SPECIFICATIONS PLUS CURRENT SUPPLEMENTAL SPECIFICATIONS. TRAFFIC CONTROL DEVICES, PROCEDURES, LAYOUTS, SIGNING AND PAVEMENT MARKINGS INSTALLED WITHIN THE LIMITS OF THIS PROJECT SHALL CONFORM TO THE "MANUAL ON UNIFORM TRAFFIC CONTROL DEVICES FOR STREETS AND HIGHWAYS" AS ADOPTED BY THE DEPARTMENT PER 761 OF THE IOWA ADMINISTRATIVE CODE (IAC) CHAPTER 130."

Scales: As Noted



2021 AVERAGE ANNUAL DAILY TRAFFIC: 25 VEHICLES PER DAY

Project Number: BROS-C086(120)--8J-86 FHWA# 317080

INDEX OF SHEETS

10 SHEETS

No.	Description
A.01	TITLE SHEET
B.01	TYPICAL SECTIONS
C.01	ESTIMATE OF QUANTITIES
C.02	GENERAL NOTES AND STANDARD ROAD PLANS
C.03	MISC. TABULATIONS
C.04	DECK GRADES
D.01	PLAN AND PROFILE
Q.01	BORING LOGS
Q.02	BORING LOGS
V.01	SITUATION PLAN, LONG. SECTION AND HYDRAULOGY

BRIDGE STANDARDS

(May be obtained at Bridge Design Services)

STANDARD	DATE ISSUED	LATEST REVISION	STANDARD	DATE ISSUED	LATEST REVISION
J30-01-06	NOV. 2006	09-2020	J30-37-06	NOV. 2006	09-2020
J30-01A-06	NOV. 2006	09-2020	J30-38-06	NOV. 2006	09-2020
J30-14E-06	NOV. 2006	09-2020	J30-39-06	NOV. 2006	09-2020
J30-15E-06	NOV. 2006	09-2020	J30-43-06	NOV. 2006	09-2020
J30-20-06	NOV. 2006	09-2020	J30-44-06	NOV. 2006	09-2020
J30-22-06	NOV. 2006	09-2020	P10L	NOV. 2006	06-2025
J30-23-06	NOV. 2006	09-2020			
J30-24-06	NOV. 2006	09-2020			

MILEAGE SUMMARY

DIV.	LOCATION	LIN. FT.	MILES
	STA. 115+00 TO STA. 116+33.5	133.50	0.0253
	STA. 116+33.5 TO STA. 117+66.5 (BRIDGE)	133.00	0.0252
	STA. 117+66.5 TO STA. 119+00	133.50	0.0253
	TOTAL	400.00	0.0758

Approved Tama County Engineer

I hereby certify that this engineering document was prepared by me or under my direct supervision and that I am a duly licensed Professional Engineer under the laws of the State of Iowa.

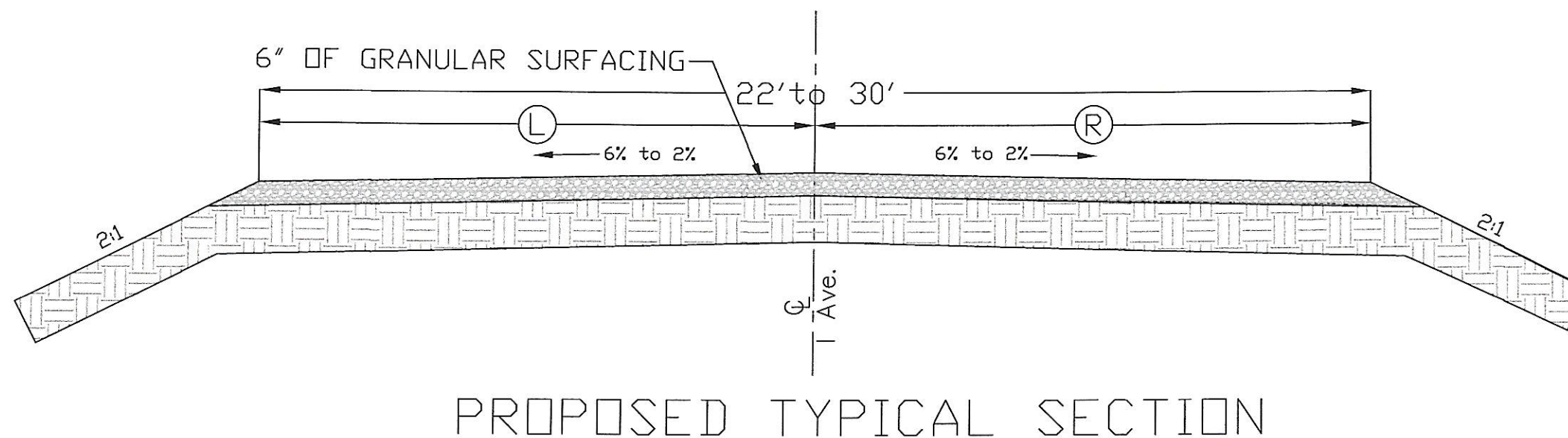
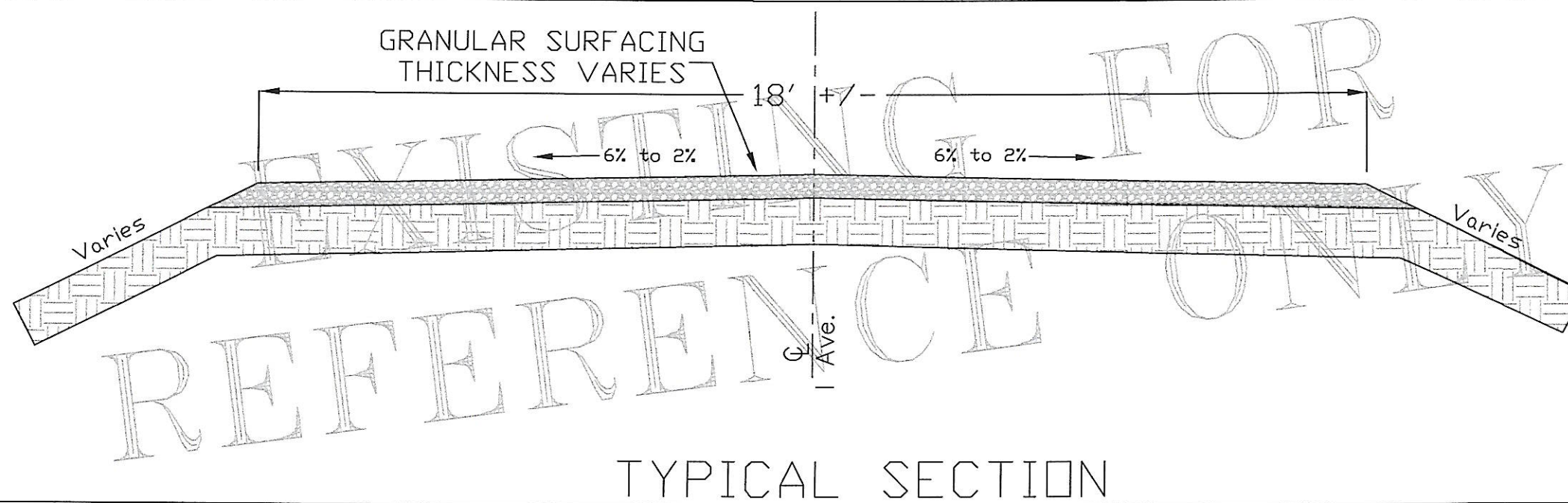
Alex M. Davis, P.E.
Endeavor Civil Engineering Inc.

My license renewal date is: December 31, 2025
Date

Pages or sheets covered by this seal:
A.01, B.01, C.01, C.02, C.03, C.04, D.01, Q.01, Q.02 & V.01

Official Seal

Approved Tama County
Board of Supervisors



TYPICAL SECTION INFORMATION						
LOCATION			DIMENSIONS		SLOPES	
ROAD IDENTIFICATION	STATION TO STATION		L	R	FS R	FS L
I Ave.	115+00	115+50	11'00"	11'00"	2:1	2:1
I Ave.	115+50	116+33.5	11'00" to 15'00"	11'00" to 15'00"	2:1	2:1
I Ave.	117+66.5	118+50	15'00" to 11'00"	15'00" to 11'00"	2:1	2:1
I Ave.	118+50	119+00	11'00"	11'00"	2:1	2:1

130' 00" x 30' 06" C.C.S. Bridge
 PROJECT NUMBER: BROS-C086(120)--8J-86
 Located on I Ave. over Richland Creek
 ABUTMENTS: INTEGRAL PIERS: P10L, TYPE 3
 39'06" END SPANS 51'00" CENTER SPAN
TYPICAL SECTIONS
 STATION: 117+00 SKEW: 45° Lt. Ahead
 TAMA COUNTY, IOWA FHWA#: 317080

ESTIMATED PROJECT QUANTITIES				
PROJECT NUMBER: BROS-C086(120)--8J-86				
130'00"x 30'06" C.C.S. Bridge, 45 Degree Lt. Ahead Skew				
REF.#	ITEM CODE	ITEM DESCRIPTION	UNIT	TOTAL
1	2101-0850001	CLEARING AND GRUBBING	ACRE	0.90
2	2102-2710070	EXCAVATION, CLASS 10, ROADWAY AND BORROW	C.Y.	56.00
3	2104-2713020	EXCAVATION, CLASS 13 CHANNEL	C.Y.	2543.00
4	2105-8425015	TOPSOIL, STRIP, SALVAGE AND SPREAD	C.Y.	266.00
5	2312-8260051	GRANULAR SURFACING, ON ROAD, CLASS A CRUSHED STONE	TON	280.00
6	2401-6745625	REMOVAL OF EXISTING BRIDGE	L.S.	1.00
7	2402-2723000	EXCAVATION, CLASS 23	C.Y.	130.00
8	2403-0100010	STRUCTURAL CONCRETE (BRIDGE)	C.Y.	348.20
9	2404-7775005	REINFORCING STEEL, EPOXY COATED	LBS	81689.00
10	2414-6424124	CONCRETE OPEN RAIL, TL-4	L.F.	284.50
11	2417-1040024	CULVERT, C.M.P. ENTRANCE PIPE, 24 INCH DIAMETER	L.F.	120.00
12	2501-0201042	PILES, STEEL, HP 10x42	L.F.	3055.00
13	2501-5478042	CONCRETE ENCASEMENT OF STEEL H-PILES, HP10x42 (P10L, TYPE 3)	L.F.	522.00
14	2507-3250005	ENGINEERING FABRIC	S.Y.	1182.00
15	2507-6800061	REVTMENT, CLASS "E"	TON	1200.00
16	2524-9100030	OBJECT MARKER, TYPE 3	EACH	4.00
17	2528-2518000	SAFETY CLOSURE	EACH	4.00
18	2528-8445110	TRAFFIC CONTROL	L.S.	1.00
19	2533-4980005	MOBILIZATION	L.S.	1.00
20	2601-2634100	MULCHING	ACRE	0.80
21	2601-2636043	SEEDING AND FERTILIZING (RURAL)	ACRE	0.80
22	2601-2642100	STABILIZING CROP - SEEDING AND FERTILIZING	ACRE	0.80
23	2602-0000020	SILT FENCE	L.F.	400.00
24	2602-0000312	PERIMETER AND SLOPE SEDIMENT CONTROL DEVICE, 12 INCH	L.F.	500.00

ESTIMATED REFERENCE INFORMATION		
Data		
NO.	ITEM CODE	DESCRIPTION
1	2101-0850001	CLEARING AND GRUBBING; ITEM INCLUDES THE TEMPORARY CONSTRUCTION EASEMENTS. ALL TREES WITHIN THE PROJECT LIMITS SHALL BE FELLED BEFORE MARCH 31, 2026.
2	2102-2710070	EXCAVATION, CLASS 10, ROADWAY AND BORROW; ITEM IS FOR CLEANING DITCH FOR THE DRIVEWAY CULVERT ON THE NORTHEAST CORNER OF THE BRIDGE. MATERIAL CAN BE USED TO COVER THE PROPOSED C.M.P.
3	2104-2713020	EXCAVATION, CLASS 13; INCLUDES CLEANING CHANNEL UPSTREAM AND DOWNSTREAM TO THE LIMITS SHOWN ON SHEET D.01 WITH POSSIBLY SOME OF THE MATERIAL TO BE USED TO BUILD OUT FORESLOPES AND SLOPES UNDER THE REVETMENT. CONTRACTOR SHALL BID THAT APPROX. 80% OF THIS MATERIAL WILL BE HAULED OFF OF THE PROJECT AS WASTE. ITEM TO INCLUDE ALL COSTS FOR HAULING, PLACING, COMPACTING AND SHAPING OF THE MATERIAL PLACED ON THE FORESLOPES. ANY MATERIAL HAULED OFF SITE SHALL NOT BE PLACED IN A FLOOD WAY.
4	2105-8425015	TOPSOIL, STRIP, SALVAGE AND SPREAD; TO BE SPREAD AFTER ALL GRADING WORK IS DONE. TOPSOIL IS FIGURED AT A DEPTH OF 3".
5	2312-8260051	GRANULAR SURFACING, ON ROAD, CLASS A CRUSHED STONE; TO BE PLACED A MINIMUM OF 6" DEEP FROM TOP OF FORESLOPE TO TOP OF FORESLOPE AFTER ALL GRADING WORK IS COMPLETED.
6	2401-6745625	REMOVAL OF EXISTING BRIDGE; THE EXISTING BRIDGE AT STA. 117+00 IS A STEEL PONY TRUSS BRIDGE WITH A CONCRETE DECK AND STUB CONCRETE ABUTMENTS. THE EXISTING BRIDGE SHALL BE REMOVED ACCORDING TO SECTION 2401 WITH ALL MATERIALS TO BECOME PROPERTY OF THE CONTRACTOR AND REMOVED FROM THE JOBSITE.
7	2402-2723000	EXCAVATION, CLASS 23; INCLUDES THE EXCAVATION FOR BOTH ABUTMENTS. MATERIAL TO BE USED TO BUILD OUT THE FORESLOPES TO MATCH THE NEW BRIDGE. ITEM TO INCLUDE ALL COSTS FOR PLACING, COMPACTING AND SHAPING OF THE MATERIAL USED FOR THE FORESLOPES.
8	2403-0100010	STRUCTURAL CONCRETE (BRIDGE); CLASS C CONCRETE TO BE USED. CERTIFIED PLANT INSPECTION IS REQUIRED.
9	2404-7775005	REINFORCING STEEL, EPOXY COATED; ALL REINFORCING STEEL IS TO BE GRADE 60.
10	2414-6424124	CONCRETE OPEN RAILING, TL-4; CERTIFIED PLANT INSPECTION IS REQUIRED FOR THIS ITEM.

ENDEAVOR CIVIL ENGINEERING

TAMA COUNTY

ESTIMATED REFERENCE INFORMATION		
Data listed is for informational purposes only and shall not constitute a basis for any extra work orders		
NO.	ITEM CODE	DESCRIPTION
11	2417-1040024	CULVERT, C.M.P. ENTRANCE PIPE, 24 INCH DIAMETER; ALL C.M.P. SHALL BE RIVETED, 14 GAUGE WITH STANDARD CORRUGATIONS. NO HELICALLY CORRUGATED PIPE WILL BE ALLOWED. SEE SHEET D.01 FOR LOCATIONS.
12	2501-0201042	PILES, STEEL 10x42; INCLUDES 7 @ 75' FOR THE SOUTH ABUTMENT, 12 @ 90' FOR THE SOUTH PIER, 12 @ 80' FOR THE NORTH PIER AND 7 @ 70' FOR THE NORTH ABUTMENT. CAST STEEL PILE POINTS ARE REQUIRED FOR ALL PILING (38 total) IN ACCORDANCE WITH ARTICLE 4167.02 OF THE CURRENT STANDARD SPECIFICATIONS AND MATERIAL I.M. 467.02. PILE POINTS ARE TO BE INCLUDED IN THIS BID ITEM.
13	2501-5478042	CONCRETE ENCASEMENT OF STEEL H-PILE, HP10x42, P10L, TYPE 3; FORMS USED TO ENCASE THE STEEL H-PILE SHALL BE SECURELY HELD IN PLACE ON BOTH TOP AND BOTTOM OF THE ENCASEMENT TO KEEP THEM CENTERED ON THE PILING. CERTIFIED PLANT INSPECTION SHALL BE REQUIRED FOR THIS ITEM.
14	2507-3250005	ENGINEERING FABRIC; TO BE PLACED UNDER ALL AREAS WHERE RIP-RAP IS PLACED ON THE SLOPES. QUANTITY INCLUDES MATERIAL FOR A MINIMUM 2' LAP AT ALL SPLICES. FABRIC SHALL BE HELD FIRMLY IN PLACE TO PREVENT MOVEMENT WHEN RIP-RAP IS PLACED. SEE SHEET D.01.
15	2507-6800061	REVTMENT, CLASS "E" RIP-RAP; CLASS "E" REVETMENT SHALL BE PLACED AT A UNIFORM THICKNESS OF 2' AFTER THE BERM AND STREAMBED HAVE BEEN UNDERCUT 3' TO ACCOMMODATE REVETMENT. REVETMENT IS TO START AT THE TOE OF THE SLOPE AND BE PLACED TO MEET THE FINAL TOP OF BERM ELEVATION. SEE SHEET D.01 FOR LOCATIONS.
16	2524-9100030	OBJECT MARKER, TYPE 3; ITEM TO INCLUDE ALL LABOR, EQUIPMENT AMD MATERIALS TO INSTALL OBJECT MARKERS PER STANDARD ROAD PLAN SI-173. OFFSET BRACKETS WILL BE REQUIRED ON THE SOUTH AND NONE ON THE NORTH. TO BE INSTALLED BEFORE THE ROAD IS OPENED TO TRAFFIC. THE PROJECT ENGINEER WILL COUNT THE NUMBER OF OBJECT MARKERS INSTALLED AND PAYMENT WILL BE THE CONTRACT UNIT PRICE PER EACH OFF OF THAT COUNT.
17	2528-2518000	SAFETY CLOSURE; SEE SHEET C.03 FOR TABULATION.
20 21 22	2601-2634100 2601-2636043 2601-2642100	MULCHING, SEEDING AND FERTILIZING (RURAL) AND STABILIZING CROP, SEEDING AND FERTILIZING; ALL AREAS DISTURBED INSIDE THE RIGHT OF WAY TO BE SEEDED AND MULCHED AFTER CONSTRUCTION IS COMPLETED. ANY AREAS DISTURBED BY THE CONTRACTOR OUTSIDE OF THE RIGHT OF WAY SHALL BE RESEDED BY THE CONTRACTOR AT THE CONTRACTOR'S EXPENSE.
23 24	2602-0000020 2602-0000312	SILT FENCE AND PERIMETER & SLOPE SEDIMENT CONTROL DEVICE, 12 INCH DIAMETER; TO BE INSTALLED AS NEEDED DURING THE COURSE OF THE PROJECT TO PREVENT ANY SILT FROM ENTERING THE STREAM OR LEAVING THE PROJECT.

130' 00" x 30' 06" C.C.S. Bridge
PROJECT NUMBER: BROS-C086(120)--8J-86
Located on I Ave. over Richland Creek
ABUTMENTS: INTEGRAL PIERS: P10L, TYPE 3
39'06" END SPANS 51'00" CENTER SPAN
ESTIMATE OF QUANTITIES
STATION: 117+00 SKEW: 45° Lt. Ahead
TAMA COUNTY, IOWA FHWA#: 317080

C.01

GENERAL NOTES & INFORMATION

DATA LISTED BELOW IS FOR INFORMATION PURPOSES ONLY AND SHALL NOT CONSTITUTE A BASIS FOR ANY EXTRA WORK ORDERS

EXISTING BRIDGE REMOVAL: THE EXISTING BRIDGE AT STA. 117+00, A 90' x 18' PONY TRUSS BRIDGE WITH CONCRETE DECK AND CONCRETE STUB ABUTMENTS, SHALL BE REMOVED ACCORDING TO SECTION 2401. ALL MATERIALS SHALL BECOME THE PROPERTY OF THE CONTRACTOR AND BE REMOVED FROM THE JOBSITE.

CONTRACTOR IS TO USE DUE CAUTION IN WORKING OVER AND AROUND ALL TILE LINES. BREAKS IN THE TILE LINE DUE TO THE CONTRACTOR'S CARELESSNESS ARE TO BE REPLACED AT THEIR EXPENSE WITHOUT COST TO TAMA COUNTY. ANY TILE BROKEN OR DISTURBED BY OUR CUT LINES WILL BE REPLACED AS DIRECTED BY THE ENGINEER.

THE BRIDGE CONTRACTOR IS TO INSTALL SUBDRAINS BEHIND THE ABUTMENTS AS DETAILED. THE SUBDRAINS SHALL BE AT LEAST 4" IN DIAMETER AND MEET THE REQUIREMENTS FOR THE TYPES PERMITTED IN SECTION 4143.01C. WHEN THE SUBDRAINS ARE INSTALLED USING FLEXIBLE TUBING OR SHORT LENGTHS OF CONCRETE OR CLAY TILE, THE ENDS SHALL CONSIST OF 6' LENGTHS OF CORRUGATED METAL PIPE (CMP) THAT PROTRUDE A MINIMUM 2 FT. THROUGH THE FORESLOPE. THE CONNECTION BETWEEN THE FLEXIBLE TUBING OR TILE AND THE CMP MAY BE MADE WITH A REDUCER COUPLING OR EXTENDING THE FLEXIBLE TUBING OR TILE INTO THE CMP A MINIMUM OF 6" AND PACKING THE OPEN SPACE BETWEEN THE PIPES WITH GROUT. A REMOVABLE 3/8" MESH GALVANIZED SCREEN IS TO BE FASTENED TO THE END OF EACH OUTLET PIPE. THE PRICE BID FOR "STRUCTURAL CONCRETE" IS TO INCLUDE ALL MATERIAL, LABOR, AND EXCAVATION NECESSARY FOR THE INSTALLATION.

FINAL CLEANUP OF THE CONSTRUCTION AREA SHALL BE IN ACCORDANCE WITH SECTION 1104.08 OF I.D.O.T. STANDARD SPECIFICATIONS.

A PRE CONSTRUCTION CONFERENCE WITH THE SUCCESSFUL BIDDER WILL BE HELD NOT LESS THAN THREE WEEKS BEFORE STARTING THE PROJECT.

CONTRACTOR IS TO USE DUE CAUTION WHEN WORKING AROUND ROW PINS AND SURVEY CONTROL POINTS WHICH ARE MARKED WITH AN OAK HUB AND CROSSING LATHE. ANY PINS DISTURBED BY THE CONTRACTOR WILL BE REPLACED AT THE CONTRACTORS EXPENSE.

CONTRACTOR TO FURNISH, ERECT, AND MAINTAIN ALL NECESSARY TRAFFIC CONTROL DEVICES ON A 24 HOUR PER DAY, 7 DAY A WEEK BASIS DURING THE CONSTRUCTION PERIOD. CONTRACTOR TO PROVIDE A 24 HOUR CALL NUMBER FOR REPAIR OF DEFICIENCIES AFTER HOURS. CONSTRUCTION WILL BE SUSPENDED IN THE EVENT THAT ANY OF THE REQUIRED TRAFFIC CONTROL DEVICES ARE NOT LEGIBLE AND OPERATIONAL AND SHALL REMAIN SUSPENDED UNTIL SUCH DEFICIENCY IS CORRECTED.

A TWO TEMPORARY CONSTRUCTION EASEMENTS HAVE BEEN OBTAINED ON THIS PROJECT. CONTRACTOR IS TO RESPECT PRIVATE PROPERTY. TAMA COUNTY WILL NOT BE HELD RESPONSIBLE FOR ANY DAMAGE TO PRIVATE PROPERTY CAUSED BY THE CONTRACTOR. ANY DAMAGE TO PRIVATE PROPERTY CAUSED BY THE CONTRACTOR SHALL BE REPAIRED TO THE SATISFACTION OF THE LANDOWNER WITH NO COST TO TAMA COUNTY.

THE ROAD WILL BE CLOSED IN THE AREA OF THE BRIDGE FOR ALL THROUGH TRAFFIC.

CONSTRUCTION STAKING TO BE DONE BY ENDEAVOR CIVIL ENGINEERING.

BRIDGE DECK SMOOTHNESS SPECIFICATION SHALL NOT APPLY TO THIS PROJECT.

CERTIFIED PLANT INSPECTION FOR ALL CONCRETE ITEMS WILL BE REQUIRED ON THIS PROJECT.

ABUTMENT PILE DESIGN NOTES;

THE CONTRACT LENGTH OF 70 AND 75 FEET FOR THE ABUTMENT PILES IS BASED ON A COHESIVE SOIL CLASSIFICATION, A TOTAL FACTORED AXIAL LOAD PER PILE (PU) OF 85 KIPS, AND A GEOTECHNICAL RESISTANCE FACTOR (PHI) OF 0.55 FOR SOIL AND 0.7 FOR ROCK END BEARING.

THE NOMINAL AXIAL BEARING RESISTANCE FOR CONSTRUCTION CONTROL WAS DETERMINED FROM A COHESIVE SOIL CLASSIFICATION AND A GEOTECHNICAL RESISTANCE FACTOR (PHI) OF 0.83 FOR SOIL AND 0.7 FOR ROCK END BEARING.

ABUTMENT PILE DRIVING NOTES;

THE REQUIRED NOMINAL AXIAL BEARING RESISTANCE FOR THE ABUTMENT PILES IS 78 TONS AT THE END OF DRIVE. THE PILE CONTRACT LENGTH SHALL BE DRIVEN AS PER PLAN UNLESS PILES REACH REFUSAL.

PIER PILE DESIGN NOTES;

THE CONTRACT LENGTH OF 80 AND 90 FEET FOR THE PIER PILES IS BASED ON A COHESIVE SOIL CLASSIFICATION, A TOTAL FACTORED AXIAL LOAD PER PILE (PU) OF 94 KIPS, AND A GEOTECHNICAL RESISTANCE FACTOR (PHI) OF 0.55 FOR SOIL AND 0.7 FOR ROCK END BEARING.

THE NOMINAL AXIAL BEARING RESISTANCE FOR CONSTRUCTION CONTROL WAS DETERMINED FROM A COHESIVE SOIL CLASSIFICATION AND A GEOTECHNICAL RESISTANCE FACTOR (PHI) OF 0.55 FOR SOIL AND 0.7 FOR ROCK END BEARING.

PIER PILE DRIVING NOTES;

THE REQUIRED NOMINAL AXIAL BEARING RESISTANCE FOR THE PIER PILES IS 86 TONS AT THE END OF DRIVE. THE PILE CONTRACT LENGTH SHALL BE DRIVEN AS PER PLAN UNLESS PILES REACH REFUSAL.

CERTIFIED PLANT INSPECTION

CERTIFIED PLANT INSPECTION SHALL APPLY TO ALL ITEMS INVOLVING CONCRETE AND H.M.A. ON THIS PROJECT.

PAINT SCRAPE SAMPLES OF THIS BRIDGE WERE TAKEN TO GET AN INDICATION OF THE EXISTENCE OF AND LEVEL OF TOTAL CHROMIUM AND TOTAL LEAD. THE ANALYSIS OF TOTAL CHROMIUM IN THE SAMPLE WAS 19800 mg/kg. THE ANALYSIS OF TOTAL LEAD IN THE SAMPLE WAS 87100 mg/kg. THE ANALYSIS SHOWS THE EXISTENCE OF THESE TWO TOXIC CONSTITUENTS. THE LEVELS INDICATED BY THESE TESTS COULD CREATE CONDITIONS ABOVE REGULATORY LIMITS FOR HEALTH SAFETY REQUIREMENTS. NO OTHER SUBSTANCES WERE ANALYZED. THE BIDDER SHALL NOT RELY ON THE LPA'S TESTING AND ANALYSIS FOR ANY PURPOSE OTHER THAN AN INDICATION OF THE EXISTENCE OF THESE TWO CONSTITUENTS. THE ANALYTICAL REPORT IS AVAILABLE AT THE TAMA COUNTY ENGINEER'S OFFICE.

STANDARD ROAD PLANS			
Number	Date	Sheets	Title
EC-201	04/20/21	6	SILT FENCE
EC-204	10/19/21	3	PERIMETER, SLOPE AND DITCH CHECK SEDIMENT CONTROL DEVICE
SI-173	04/19/16	2	OBJECT MARKERS
TC-252	10/21/25	4	ROUTES CLOSED TO TRAFFIC

AN ASBESTOES INSPECTION WAS CONDUCTED IN MAY 2025 BY CRAIG DAVIS, LICENSE NUMBER NO; 25-13042. THERE WERE NO ASBESTOES CONTAINING MATERIALS FOUND IN THE EXISTING STRUCTURE

130' 00" x 30' 06" C.C.S. Bridge

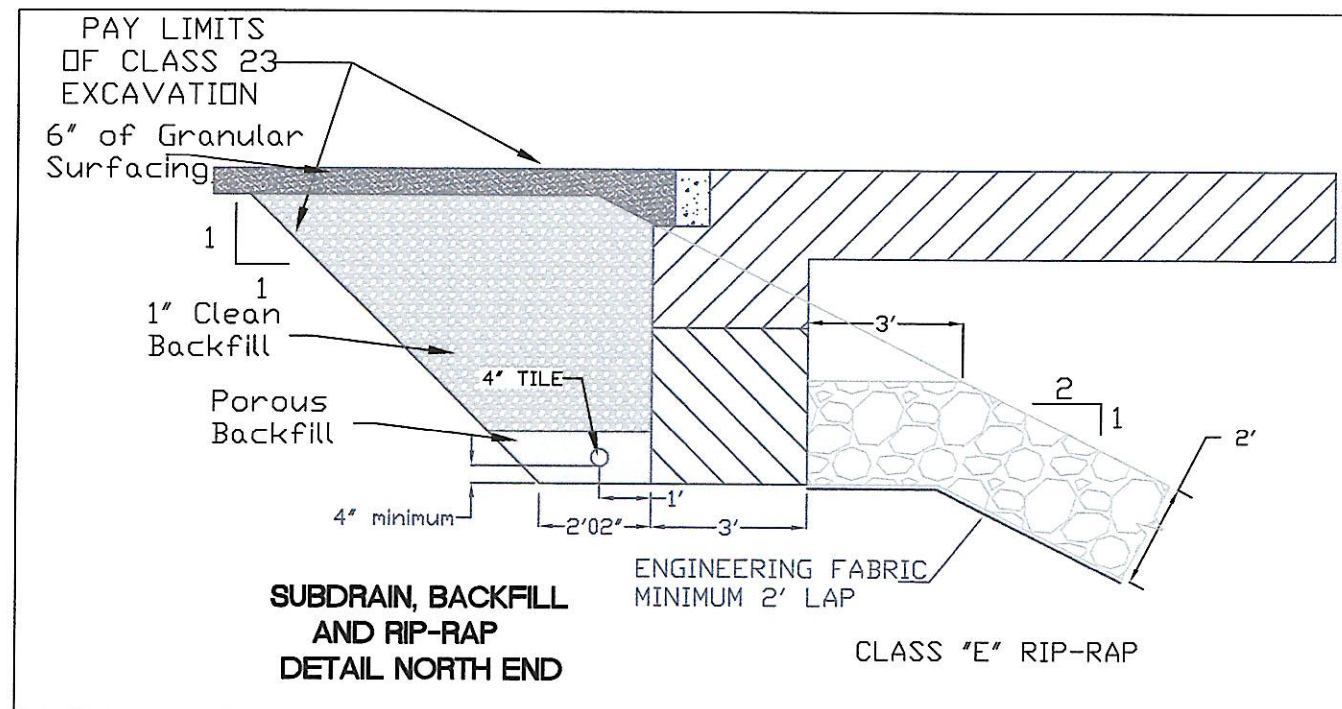
PROJECT NUMBER: BROS-C086(120)--8J-86

Located on I Ave. over Richland Creek

ABUTMENTS: INTEGRAL PIERS: P10L, TYPE 3
39'06" END SPANS 51'00" CENTER SPAN

GENERAL NOTES AND STANDARD ROAD PLANS

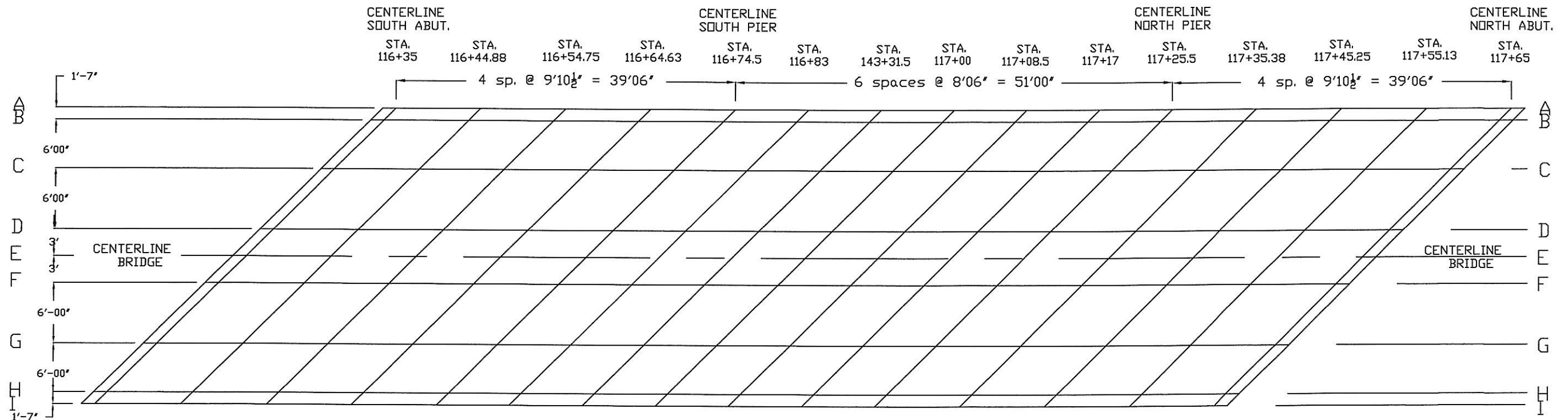
STATION: 117+00 SKEW: 45° Lt. Ahead
TAMA COUNTY, IOWA FHWA#: 317080



C.M.P. INFORMATION								
Inlet Station	Outlet Station	Side (Lt./Rt.)	Length (lf)	Size (inches)	Inlet Apron (Y/N)	Outlet Apron (Y/N)	Inlet Elevation	Outlet Elevation
118+34	117+14	Rt.	120	24	N	N	748.00	745.00
REMARKS; REMOVE EXSTING 24"x44' C.M.P. AT STA. 118+71. REMOVAL SHALL BE INCIDENTAL TO THE C.M.P. BID ITEM.								

TABULATION OF SAFETY CLOSURES			
Refer to Section 2518 of the Standard Specifications			
STATION	CLOSURE TYPE		REMARKS
	ROAD QTY.	HAZARD QTY.	
115+00	1	-	South End of Project
116+00	-	1	South End of Bridge
118+00	-	1	North End of Bridge
119+00	1	-	North End of Project

REMOVAL OF EXISTING BRIDGE		
LOCATION	DESCRIPTION	DISPOSAL
STA. 117+00	90'x18' PONY TRUSS	CONTRACTOR
REMARKS; THE EXISTING PONY TRUSS BRIDGE WITH CONCRETE DECK AND STUB CONCRETE ABUTMENTS, SHALL BE REMOVED ACCORDING TO STANDARD SPECIFICATION 2401. ALL MATERIALS ARE TO BECOME THE PROPERTY OF THE CONTRACTOR AND SHALL BE REMOVED FROM THE PROJECT.		



TOP OF SLAB ELEVATIONS WITH NO CAMBER FIGURED																	
WEST																	
	S. End	S. Abut	1/4	1/2	3/4	S. Pier	1/6	1/3	1/2	2/3	5/6	N. Pier	1/4	1/2	3/4	N. Abut.	N. End
A	754.70	754.70	754.70	754.70	754.70	754.70	754.70	754.70	754.70	754.70	754.70	754.70	754.70	754.70	754.70	754.70	A
B	754.73	754.73	754.73	754.73	754.73	754.73	754.73	754.73	754.73	754.73	754.73	754.73	754.73	754.73	754.73	754.73	B
C	754.85	754.85	754.85	754.85	754.85	754.85	754.85	754.85	754.85	754.85	754.85	754.85	754.85	754.85	754.85	754.85	C
D	754.97	754.97	754.97	754.97	754.97	754.97	754.97	754.97	754.97	754.97	754.97	754.97	754.97	754.97	754.97	754.97	D
E	755.00	755.00	755.00	755.00	755.00	755.00	755.00	755.00	755.00	755.00	755.00	755.00	755.00	755.00	755.00	755.00	E
F	754.97	754.97	754.97	754.97	754.97	754.97	754.97	754.97	754.97	754.97	754.97	754.97	754.97	754.97	754.97	754.97	F
G	754.85	754.85	754.85	754.85	754.85	754.85	754.85	754.85	754.85	754.85	754.85	754.85	754.85	754.85	754.85	754.85	G
H	754.73	754.73	754.73	754.73	754.73	754.73	754.73	754.73	754.73	754.73	754.73	754.73	754.73	754.73	754.73	754.73	H
I	754.70	754.70	754.70	754.70	754.70	754.70	754.70	754.70	754.70	754.70	754.70	754.70	754.70	754.70	754.70	754.70	I
EAST																	

TOP OF SLAB ELEVATIONS WITH CAMBER FIGURED																	
WEST																	
	S. End	S. Abut	1/4	1/2	3/4	S. Pier	1/6	1/3	1/2	2/3	5/6	N. Pier	1/4	1/2	3/4	N. Abut.	N. End
A	754.70	754.70	754.74	754.75	754.72	754.70	754.73	754.75	754.77	754.75	754.73	754.70	754.72	754.75	754.74	754.70	A
B	754.73	754.73	754.77	754.78	754.75	754.73	754.76	754.78	754.80	754.78	754.76	754.73	754.75	754.78	754.77	754.73	B
C	754.85	754.85	754.89	754.90	754.87	754.85	754.88	754.90	754.92	754.90	754.88	754.85	754.87	754.90	754.89	754.85	C
D	754.97	754.97	755.01	755.02	754.99	754.97	755.00	755.02	755.04	755.02	755.00	754.97	754.99	755.02	755.01	754.97	D
E	755.00	755.00	755.04	755.05	755.02	755.00	755.03	755.05	755.07	755.05	755.03	755.00	755.02	755.05	755.04	755.00	E
F	754.97	754.97	755.01	755.02	754.99	754.97	755.00	755.02	755.04	755.02	755.00	754.97	754.99	755.02	755.01	754.97	F
G	754.85	754.85	754.89	754.90	754.87	754.85	754.88	754.90	754.92	754.90	754.88	754.85	754.87	754.90	754.89	754.85	G
H	754.73	754.73	754.77	754.78	754.75	754.73	754.76	754.78	754.80	754.78	754.76	754.73	754.75	754.78	754.77	754.73	H
I	754.70	754.70	754.74	754.75	754.72	754.70	754.73	754.75	754.77	754.75	754.73	754.70	754.72	754.75	754.74	754.70	I
EAST																	

TAMA COUNTY
T-82-N, R-15-W
SECTION 21
COLUMBIA TOWNSHIP
OVER RICHLAND CREEK

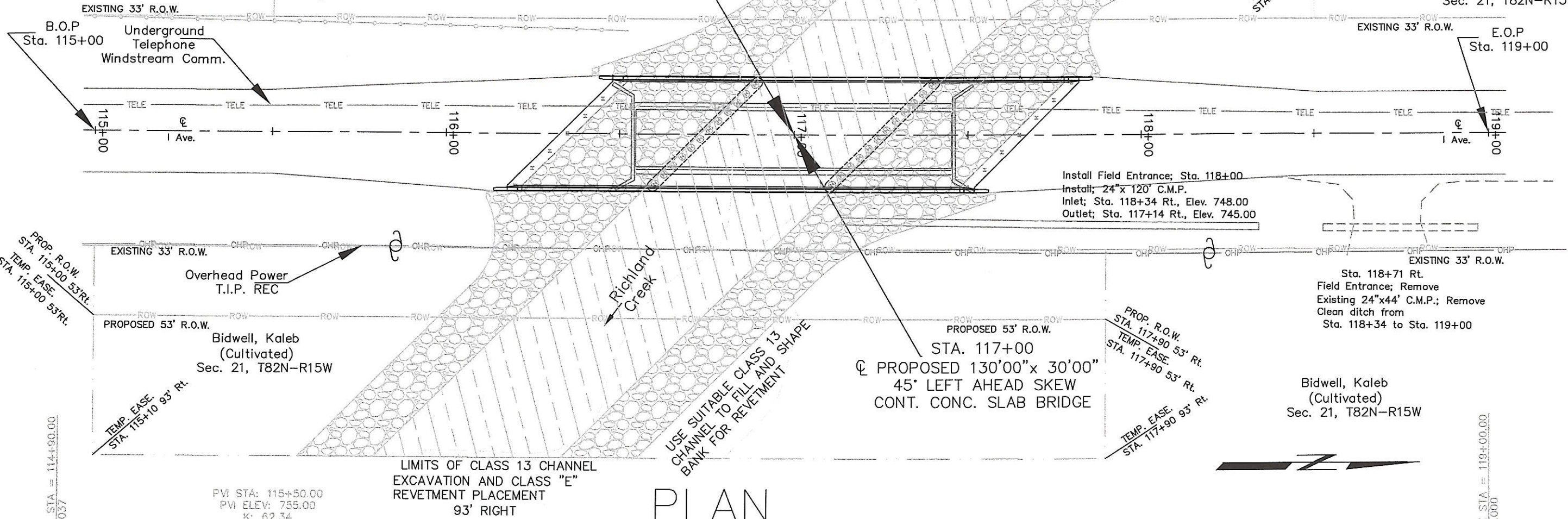
Davis, Melody J.
Life Estate & Revocable Trust
(Cultivated/Timber)
Sec. 21, T82N-R15W

STA. 117+00
EXISTING 90'x18'
PONY TRUSS BRIDGE
(remove)

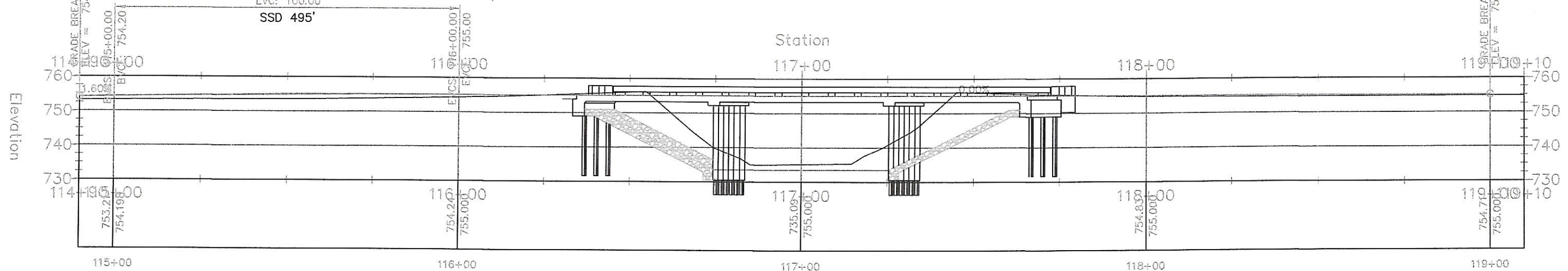
LIMITS OF CLASS 13 CHANNEL
EXCAVATION AND CLASS "E"
REVETMENT PLACEMENT
53' LEFT

BENCHMARK; SPIKE IN POWER POLE
STA. 118+20, 34' RIGHT
ELEVATION = 752.00

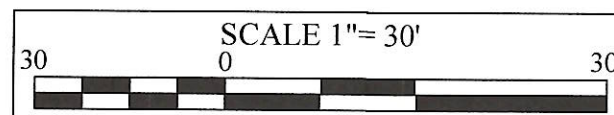
Davis, Melody J.
Life Estate & Revocable Trust
(Cultivated/Timber)
Sec. 21, T82N-R15W



PLAN



PROFILE



ENDEAVOR CIVIL ENGINEERING

TAMA COUNTY

130' 00" x 30' 06" C.C.S. Bridge
PROJECT NUMBER: BROS-C086(120)-8J-86
Located on I Ave. over Richland Creek
ABUTMENTS: INTEGRAL PIERS: P10L, TYPE 3
39'06" END SPANS 51'00" CENTER SPAN
PLAN AND PROFILE
STATION: 117+00 SKEW: 45° Lt. Ahead
TAMA COUNTY, IOWA FHWA#: 317080

D.01

BORING LOG No. 1 (North Abutment)													Page 1 of 3		
PROJECT				SITE											
I Ave Bridge				Tama County, IA											
GRAPHIC LOG	Approx. Surface Elevation (ft):858 Site Datum: Drilling Method:HSA			USCS SYMBOL	DEPTH (ft.)	SAMPLES				TESTS				OTHER	
	DESCRIPTION					NUMBER	TYPE	RECOVERY	SPT - N (BLOWS / FT.)	MOISTURE, %	DRY DENSITY (PCF)	UNCONFINED STRENGTH (PSF)			
	Fill -- Sandy lean CLAY, with gravel, dark brown			CL	0	1	AS			13					
	SOFT SILTY CLAY					2	AS			17.5					
					5	3	SS	11	4	24.7					
	6.0	Buried Topsoil -- Lean CLAY, trace organic matter, very dark brown			CL		4	SS	16	10	26.5				
	FIRM SILTY CLAY														
	8.5	Alluvium -- Lean CLAY, dark gray and dark brown			CL	10	5	SS	18	8	19.9				
	FIRM SILTY CLAY														
	12.0	Alluvium -- Lean CLAY, trace sand seams, yellowish brown and grayish brown			CL	15	6	SS	14	4	25				
	STIFF SILTY CLAY														
	17.0	Alluvium -- Lean CLAY, gray			CL	20	7	SS	18	1	27.2				
SOFT SILTY CLAY				8		SS	18	2	28.8						
			25												
27.0	Alluvium -- Fine to coarse SAND, with gravel, gray			SP		30	9	SS	10	25	12.2				
GRAVELLY SAND					10	SS	9	39	12.3						
Notes: Soil classifications for using the Iowa DOT LRFD Driven Pile Design Charts are shown in blue.														Calibrated hand penetrometer	
														Hammer Type: Automatic	
Water Level:					Boring Started: 7-18-2025										
					Boring Completed: 7-18-2025										
					Rig: TRK					Foreman: JH					
					Approved: NG					Job #: 1-5716					

THE STRATIFICATION LINES REPRESENT THE APPROXIMATE BOUNDARY LINES BETWEEN SOIL AND ROCK TYPES, IN-SITU, THE TRANSITION MAY BE GRADUAL

BORING LOG No. 1 (North Abutment)

Page 2 of 3

PROJECT				SITE										
I Ave Bridge				Tama County, IA										
GRAPHIC LOG	Approx. Surface Elevation (ft):858 Site Datum: Drilling Method:HSA			USCS SYMBOL	DEPTH (ft.)	SAMPLES				TESTS				
	DESCRIPTION					NUMBER	TYPE	RECOVERY	SPT - N (BLOWS / FT.)	MOISTURE, %	DRY DENSITY (PCF)	UNCONFINED STRENGTH (PSF)	OTHER	
	Alluvium -- Fine to coarse SAND, with gravel, gray			CL	35									
	GRAVELLY SAND				40	11	SS	10	50/6"	18.6				
	42.0		816.0		45	12	SS	16	15	14.8				
	Glacial Till -- Sandy lean CLAY, trace gravel, dark gray				50	13	SS	18	15	14				
	VERY FIRM SANDY GLACIAL CLAY				55	14	SS	17	20	14.2				
					60	15	SS	15	23	14.5				
					65	16	SS	16	20	12.1				
						17	SS	18	21	13				

Notes: Soil classifications for using the Iowa DOT LRFD Driven Pile Design Charts are shown in blue.

Calibrated hand penetrometer

Hammer Type: Automatic

Water Level:

21 Ft. While Drilling

Ft. After Drilling

Ft.

Boring Started: 7-18-2025

Boring Completed: 7-18-2025

Rig: TRK

Foreman: JH

Approved: NG

Job #: 1-5716

THE STRATIFICATION LINES REPRESENT THE APPROXIMATE BOUNDARY LINES BETWEEN SOIL AND ROCK TYPES, IN-SITU, THE TRANSITION MAY BE GRADUAL

BORING LOG No. 1 (North Abutment)

Page 3 of 3

PROJECT				SITE							
I Ave Bridge				Tama County, IA							
GRAPHIC LOG	Approx. Surface Elevation (ft):858 Site Datum: Drilling Method:HSA	USCS SYMBOL	DEPTH (ft.)	SAMPLES				TESTS			
				NUMBER	TYPE	RECOVERY	SPT - N (BLOWS / FT.)	MOISTURE, %	DRY DENSITY (PCF)	UNCONFINED STRENGTH (PSF)	OTHER
	DESCRIPTION		70								
	Glacial Till -- Sandy lean CLAY, trace gravel, dark gray		75								
	VERY FIRM SANDY GLACIAL CLAY		80	18	SS	18	20	12.3			
			85								
			90	19	SS	18	23	12.1			
			95								
			100	20	SS	18	25	12			
	Bottom of boring										

Notes: Soil classifications for using the Iowa DOT LRFD Driven Pile Design Charts are shown in blue.

Calibrated hand penetrometer

Hammer Type: Automatic

Water Level:

21

Ft. While Drilling

Ft. After Drilling

Ft.

Boring Started: 7-18-2025

Boring Completed: 7-18-2025

Rig: TRK

Foreman: JH

Approved: NG

Job #: 1-5716

PROJECT

THE STRATIFICATION LINES REPRESENT THE APPROXIMATE BOUNDARY LINES BETWEEN SOIL AND ROCK TYPES, IN-SITU, THE TRANSITION MAY BE GRADUAL

BORING LOG No. 2 (South Abutment)

Page 1 of 3

I Ave Bridge

SITE

Tama County, IA

GRAPHIC LOG	Approx. Surface Elevation (ft):858 Site Datum: Drilling Method:HSA	USCS SYMBOL	DEPTH (ft.)	SAMPLES				TESTS				OTHER
				NUMBER	TYPE	RECOVERY	SPT - N (BLOWS / FT.)	MOISTURE, %	DRY DENSITY (PCF)	UNCONFINED STRENGTH (PSF)		
	DESCRIPTION											
	1.0 Fill -- GRAVEL, with sand, gray 857.0	GP	0	1	AS			5.8				
	Fill -- Sandy lean CLAY, trace gravel, dark brown STIFF SILTY CLAY	CL		2	SS	10	6	10.8				
	3.5 854.5	CL		3	SS	11	3	22.5				
	Buried Topsoil -- Lean CLAY, trace organic matter and roots, very dark brown SOFT SILTY CLAY	CL	5									
	6.0 852.0	CL		4	SS	12	6	20				
	Alluvium -- Lean CLAY, dark brown STIFF SILTY CLAY	CL		5	SS	14	6	29.6				
	12.0 846.0	CL	10									
	Alluvium -- Lean CLAY, gray SOFT SILTY CLAY	CL	15	6	SS	18	4	38.5				
				7	SS	16	2	33.7				
			20									
			25	8	SS	18	3	27.8				
	29.0 829.0	GP	30	9	SS	16	7	16				
	Alluvium -- Fine to medium SAND, trace gravel, gray SILTY SAND			10	SS	11	8	13				

Notes: Soil classifications for using the Iowa DOT LRFD Driven Pile Design Charts are shown in blue

Calibrated hand penetrometer

Hammer Type: Automatic

Water Level:

18 Ft. While Drilling

Ft. After Drilling

Ft.

Boring Started: 7-17-2025

Boring Completed: 7-17-2025

Rig: TRK

Foreman: JH

Approved: NG

Job #: 1-5716

THE STRATIFICATION LINES REPRESENT THE APPROXIMATE BOUNDARY LINES BETWEEN SOIL AND ROCK TYPES, IN-SITU, THE TRANSITION MAY BE GRADUAL

BORING LOG No. 2 (South Abutment)												Page 2 of 3			
PROJECT						SITE									
I Ave Bridge						Tama County, IA									
GRAPHIC LOG	Approx. Surface Elevation (ft):858 Site Datum: Drilling Method:HSA					USCS SYMBOL	DEPTH (ft.)	SAMPLES				TESTS		OTHER	
	DESCRIPTION							NUMBER	TYPE	RECOVERY	SPT - N (BLOWS / FT.)	MOISTURE, %	DRY DENSITY (PCF)		UNCONFINED STRENGTH (PSF)
	Alluvium -- Fine to medium SAND, trace gravel, gray					CL	35								
	37.0	821.0					11	SS	18	14	13.6				
	Glacial Till -- Sandy lean CLAY, trace gravel, dark gray														
	FIRM-VERY FIRM SANDY GLACIAL CLAY														
	Glacial Outwash -- Fine to medium SAND, trace gravel, gray					SP	55								
	57.0	801.0					15	SS	10	16	15.9				
	FINE SAND														
	Glacial Till -- Sandy lean CLAY, trace gravel, dark gray					CL	60								
	64.0	794.0					16	SS	16	14	22.9				
	VERY FIRM SANDY GLACIAL CLAY														
Notes:Soil classifications for using the Iowa DOT LRFD Driven Pile Design Charts are shown in blue															
Calibrated hand penetrometer															
Hammer Type:Automatic															
Water Level:						Boring Started:7-17-2025									
						Boring Completed:7-17-2025									
						Rig:TRK				Foreman:JH					
						Approved:NG				Job #:1-5716					

THE STRATIFICATION LINES REPRESENT THE APPROXIMATE BOUNDARY LINES BETWEEN SOIL AND ROCK TYPES, IN-SITU, THE TRANSITION MAY BE GRADUAL

BORING LOG No. 2 (South Abutment)												Page 3 of 3
PROJECT				SITE								
I Ave Bridge				Tama County, IA								
GRAPHIC LOG	Approx. Surface Elevation (ft):858 Site Datum: Drilling Method:HSA		USCS SYMBOL	DEPTH (ft.)	SAMPLES				TESTS			
	DESCRIPTION				NUMBER	TYPE	RECOVERY	SPT - N (BLOWS / FT.)	MOISTURE, %	DRY DENSITY (PCF)	UNCONFINED STRENGTH (PSF)	OTHER
	Glacial Till -- Sandy lean CLAY, trace gravel, dark gray			70								
					18	SS	16	23	11			
				75								
					19	SS	18	21	11.5			
				80								
				85								
				90								
			95									
			100									
					21	SS	18	21	12.3			
			100									
							</					

THE STRATIFICATION LINES REPRESENT THE APPROXIMATE BOUNDARY LINES BETWEEN SOIL AND ROCK TYPES, IN-SITU, THE TRANSITION MAY BE GRADUAL

ENDEAVOR CIVIL ENGINEERING

TAMA COUNTY

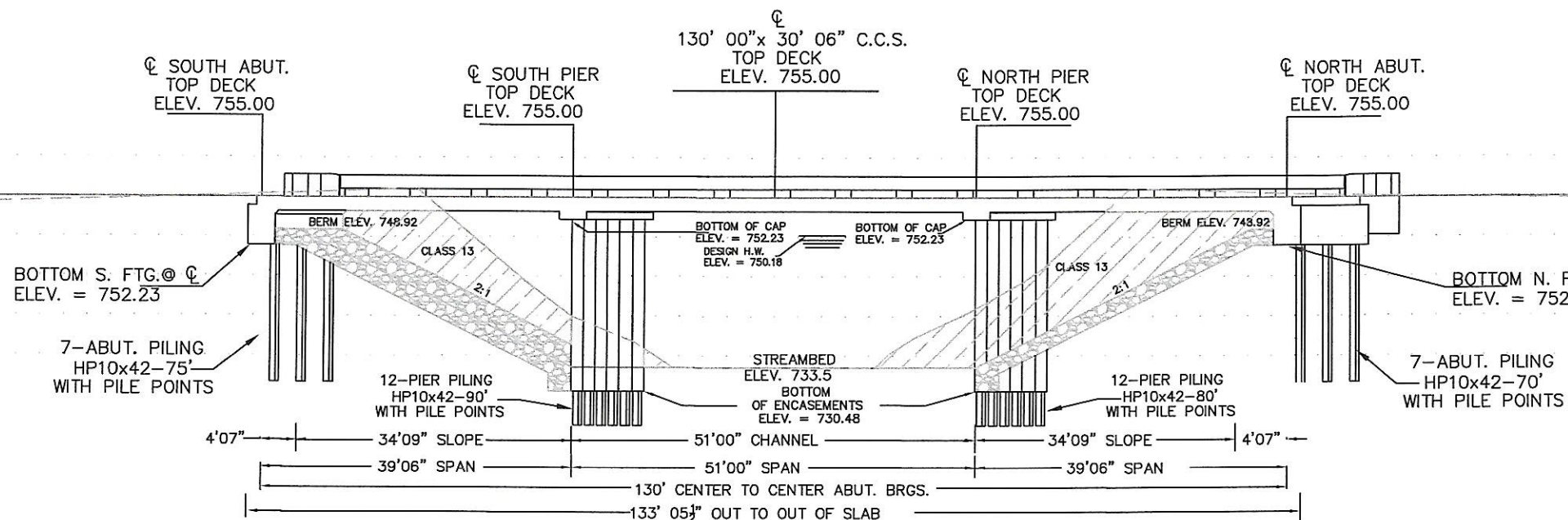
130' 00" x 30' 06" C.C.S. Bridge
PROJECT NUMBER: BROS-C086(120)-8J-86
Located on I Ave. over Richland Creek
ABUTMENTS; INTEGRAL PIERS; P10L, TYPE 3
39'06" END SPANS 51'00" CENTER SPAN
BORING LOGS
STATION: 117+00 SKEW: 45° Lt. Ahead
TAMA COUNTY, IOWA FHWA#: 317080

Q.02

TAMA COUNTY
T-82-N, R-15-W
SECTION 21
COLUMBIA TOWNSHIP
OVER RICHLAND CREEK

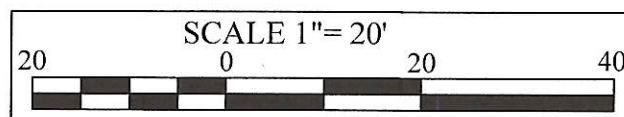
760
755
750
745
740
735

760
755
750
745
730
725

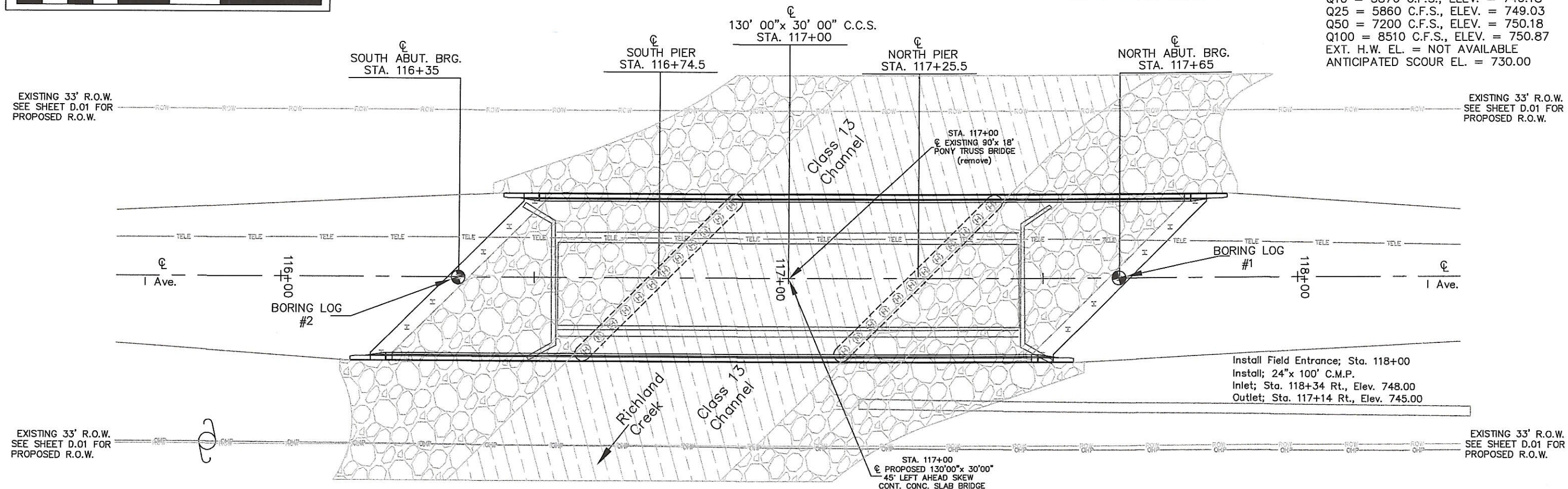


HYDRAULIC DATA

DRAINAGE AREA = 30.2 SQ. MILES
DESIGN DISCHARGE = 7200 CFS
DISCHARGE THROUGH BRIDGE = 7200 CFS
ROAD GRADE OVERFLOW = 0.00 N/A
DESIGN HIGH WATER ELEV. = 750.18
MANNING SLOPE = 0.00214 FT./FT.
BRIDGE WATERWAY AREA = 1407.0 S.F.
DESIGN VELOCITY = 7.24 F.P.S.
Q10 = 3870 C.F.S., ELEV. = 746.18
Q25 = 5860 C.F.S., ELEV. = 749.03
Q50 = 7200 C.F.S., ELEV. = 750.18
Q100 = 8510 C.F.S., ELEV. = 750.87
EXT. H.W. EL. = NOT AVAILABLE
ANTICIPATED SCOUR EL. = 730.00



CENTERLINE SECTION



SITUATION PLAN

ENDEAVOR CIVIL ENGINEERING

TAMA COUNTY

130' 00" x 30' 06" C.C.S. Bridge
PROJECT NUMBER: BROS-C086(120)-8J-86
Located on I Ave. over Richland Creek
ABUTMENTS: INTEGRAL PIERS: P10L, TYPE 3
39'06" END SPANS 51'00" CENTER SPAN
SITUATION PLAN
STATION: 117+00 SKEW: 45° Lt. Ahead
TAMA COUNTY, IOWA FHWA#: 317080

V.01

EASTERN IOWA WORKFORCE DEVELOPMENT AREA

CHIEF ELECTED OFFICIALS SHARED LIABILITY AGREEMENT

This Agreement is entered into by the County Elected Officials of Des Moines, Lee, Henry, Louisa, Clinton, Jackson, Scott, Muscatine, Appanoose, Davis, Hardin, Jefferson, Keokuk, Lucas, Mahaska, Marshall, Monroe, Tama, Poweshiek, Van Buren, Wapello, and Wayne counties, hereinafter collectively referred to as Chief Elected Officials (CEOs). The purpose of this Agreement is to describe how CEOs will organize themselves and act to fulfill their responsibilities for Workforce Innovation and Opportunity Act (WIOA) services provided in the Eastern Iowa Workforce Development Area (EIWDA), a Local Workforce Development Area approved by Iowa Workforce Development under WIOA.

A. GENERAL PROVISIONS

1. The name of the Agreement shall be the Eastern Iowa Workforce Development Area Chief Elected Officials Shared Liability Agreement.
2. This Agreement reflects the unanimous decisions of all twenty-two (22) county CEOs holding office at the time of signing.
3. No property, real or personal, shall be acquired as a result of this Agreement.
4. It is understood and agreed that this document incorporates and includes all prior negotiations, correspondence, conversations, agreements, or understandings applicable to the matters contained herein, and the parties agree that there are no commitments, agreements, or understandings concerning the subject matter of this Agreement that are not contained in this document. Accordingly, it is agreed that no deviation from the terms hereof shall be predicated upon any prior representation or agreements, whether oral or written.
5. Whenever any party desires to give notice unto another party, notice must be given in writing sent by registered United States Mail with Return Receipt Requested, addressed to the party for whom it is intended, at the place last specified, and the place for giving such notice in compliance with the provision of this paragraph or by electronic notice at the e-mail address provided for notifications. The parties designate the seat of the Legislative Body for their municipality as the place for giving notice under this agreement.
6. This Agreement shall be deemed to be a binding agreement and shall be construed in accordance with and governed by the laws of the State of Iowa.
7. In the event that any provisions of this Agreement or the application of any such provision to any party or circumstances be held invalid or unenforceable or the application of such provision to parties or circumstances be unenforceable, the remainder of this Agreement shall not be affected thereby and shall remain in full force and effect.
8. Any waiver at any time by any party hereto of its rights with respect to any matter arising in connection with this Agreement shall not be considered a waiver with respect to any

subsequent default or matter.

B. CEO DESIGNATION AND ORGANIZATION

1. Each county that is a signatory to this agreement shall appoint one (1) member of that county's Board of Supervisors to the Eastern Iowa Workforce Development Area (EIWDA), and each member shall have one (1) vote. Any power not specifically delegated to the Chief Lead Elected Official (CLEO) shall be retained by the CEOs of the EIWDA. Length of term will be determined by each County Board of Supervisors for their member.
2. When a new CEO is elected within the EIWDA, they will submit a written statement acknowledging that they have read, understand, and will comply with the current Agreement and reserves the option to request negotiations to amend the Agreement at any time during the official's tenure as a CEO.
3. Each CEO signing this Agreement shall assume the roles and responsibilities assigned collectively to the CEOs under WIOA.
4. Each CEO may appoint a member of the county board of that county to act in his or her place under this Agreement.
5. Should any member of the Agreement have a conflict of interest pertaining to any issue coming before the CEOs, or if there is an appearance of a conflict of interest, that member shall declare any such conflict prior to any discussion on the issue and shall refrain from voting on said issue.
6. The CEOs shall comply with the Iowa Open Meetings Act and shall operate under Robert's Rules of Order.
7. The CEOs may establish such standing, special, and advisory committees as it shall deem appropriate. Any committee established hereunder by the CEOs may be abolished by the CEOs at any time.
8. It is the intent of all CEOs that WIOA services be provided to all counties within this Local Area on an equitable and fair basis based on the population size of each IowaWORKS service area, taking into account the total funds available and the proportional need for services of each county.

C. PROCESS FOR SELECTION OF CLEO AND CEO REQUIREMENTS

1. The CEOs shall select by majority vote from among their members a Chief Lead Elected Official (CLEO) and a Vice-CLEO to be elected annually at the first meeting of each calendar year. The CLEO and Vice-CLEO shall be elected at the first meeting of each calendar year upon the approval of this Agreement and shall serve for a term of one year and may serve multiple terms by a majority vote of the CEOs. An election of the CLEO and Vice-CLEO shall be held annually thereafter.
2. Vice-CLEO. At the request of the CLEO or in the absence of the CLEO, or during his/her

inability to act, the Vice CLEO shall assume the powers and duties of the CLEO. The Vice-CLEO shall have such other powers and perform such other duties as may be assigned to him/her by the CEOs.

3. The CLEO will serve as the primary point of contact for the EIWDA and shall be the point of contact for Iowa Workforce Development in the dissemination of information to the EIWDA. The CLEO will serve as the signatory for the group of CEOs. In the absence of the CLEO, the Vice CLEO may sign on behalf of the EIWDA and serve and act as a duly authorized signatory for the EIWDA on all agreements, grants, or any other document requiring a signature and duly approved by the EIWDA, in order to be legally binding. The CLEO will act on behalf of the CEOs and will collaborate with the Vice-CLEO and the LWDB chair on a number of issues and tasks.
4. The CLEO shall preside over each meeting.
5. The CLEO shall provide an agenda prior to each meeting. Any member may request that an item be added to the agenda.
6. The CEOs shall meet on a regular basis virtually to conduct the business required of them under WIOA. These meetings shall be held not less frequently than quarterly.
7. Twelve (12) members or more shall represent a quorum at meetings.
8. Following the last meeting of each calendar year, a letter will be sent to each County Board of Supervisors reporting the CEO's attendance for that calendar year.
9. The CLEO or Vice CLEO will not, for the term as CLEO, serve as the highest-ranking officer on any board or other entity that governs the fiscal agent or a direct service provider.
10. Whenever a potential conflict of interest arises, either directly or indirectly, the CLEO shall act to the benefit of the EIWDA and not his/her own interests. When any such situation occurs, the CLEO is required to disclose the possible conflict of interest.

D. NOMINATION AND APPOINTMENTS TO THE LWDB

The CLEO has the exclusive responsibility to appoint members to the LWDB from individuals recommended by the CEOs. Membership of the LWDB shall meet the guidelines of WIOA section 107(b)(2).

1. Each CEO will contact (within their county) appropriate businesses, workforce, or educational entities, including chambers of commerce, labor representatives, and local educational entities, to request nominations for LWDB membership. Those entities contacted will be provided with a description of the roles and responsibilities of the LWDB.
2. A CEO may appoint a member who lives or works in a different county if that appointee meets all the requirements and is approved by the CEO from which the appointment would normally

come.

3. The CEOs shall ensure that private sector LWDB members are nominated timely to expedite approval of these nominees by the state.
4. The CEOs shall appoint members to ensure that at all times a majority of LWDB membership (minimum 51%) are business representatives who represent business owners, chief executive officers, and other executives with optimum policymaking or hiring authority and provide employment in in-demand industry sectors or occupations in the Local Area. At least two of the business representatives must represent small businesses as defined by the Small Business Administration. CEOs shall seek business nominations from local business organizations and trade associations.
5. The CEOs shall appoint members to ensure that at all times not less than 20% of the LWDB membership are workforce representatives who represent labor organizations, joint labor-management or union-affiliated registered apprenticeship programs, nominated by labor organizations, by local labor federations, or by other representatives of employees. Other additional positions can be filled by community-based organizations that have demonstrated experience and expertise in addressing the employment, training, or education needs of veterans or individuals with disabilities, and representatives of organizations that have demonstrated experience and expertise in addressing the employment, training, and education needs of eligible youth, including out-of-school youth.
6. The CEOs shall appoint members to ensure that at all times there is a representative from adult education and a representative from higher education providing workforce investment activities, including community colleges. Additional positions may include representatives of local educational agencies and community-based organizations with expertise in serving individuals with barriers to employment
7. When there is more than one local area provider of adult education services or multiple higher education institutions providing workforce activities, nominations will be solicited from those providers and institutions. This requirement provides for a representative selection process for these membership categories.
8. The CEOs shall appoint members to ensure that at all times there is a representative from economic and community development entities, a member from the state employment service under the Wagner-Peyser Act, and a representative from Vocational Rehabilitation. Additional positions may include a member from agencies running transportation, housing, or public assistance programs, or members from philanthropic organizations.
9. CEOs will ensure that overall, members of the LWDB, excluding the Wagner Peyser Act and Vocational Rehabilitation representatives, will be balanced by political affiliation. After applying the exclusions, no more than one-half plus one of the remaining board members will be composed of any one political party.
10. An individual may be appointed as a representative of more than one entity if the

individual meets all the criteria for representation, including the criteria described above.

11. The CEOs will aim to maintain balance across the entire local area to ensure equal representation.
12. The CEOs will determine if any additional members shall be appointed beyond those minimally required by WIOA or the state. If any such appointments are made, the 51% business representative membership and 20% labor representative membership requirements shall be maintained.
13. The CLEO has full authority to appoint nominations to the LWDB.
14. Appointments shall be for three-year terms, with one-third of the membership to be appointed each year.
15. When nominating an individual to serve on the LWDB, all nominating organizations will complete and submit the following nomination documentation to the CLEO for member selection and appointment.
 - a. Signed Conflict of Interest Form
 - b. Signed Member Nomination Form
16. Completed appointment documentation for LWDB membership will be submitted to IWD for review, and the appointee will not be appointed to the LWDB until the CLEO has received confirmation from IWD that the appointment has been affirmed.
17. Upon confirmation from IWD, the CLEO will notify each member appointed to the LWDB by letter or electronic means. Notification shall be at least 30 days before the next regularly scheduled meeting.
18. CEOs shall perform an annual assessment of the Board's membership and performance to ensure that the Board is performing adequately and in accordance with the direction and guidance CEOs provide.

E. REAPPOINTMENT OF MEMBERS

1. The CLEO is responsible for all reappointments. New nominations are required for all appointments from nominating organizations.
2. The CLEO must process reappointments within sixty (60) business days from the effective date of the term expiration. During the sixty (60) day period, the LWDB will be able to legally act as a board and conduct business. If the CLEO fails to reappoint a LWDB member in a required category within sixty (60) business days, the LWDB will be out of compliance with membership composition requirements, and any business conducted shall not be considered legal, unless the LWDB has a waiver in place in accordance with Vacancies.
3. The CLEO must indicate both the official beginning date of the reappointment and

the official term expiration date on the nomination form.

F. CHANGE IN STATUS

1. Members may continue to serve on the LWDB until:
 - a. Their term of office expires; however, the member may continue to serve until the replacement nominee's required documents are approved and confirmed in writing by the state
 - b. The classification under which they were appointed changes
 - c. The appointment is revoked by the appointing CEO
 - d. The member becomes incapacitated or otherwise unable to complete their term of office
 - e. The member resigns.
2. LWDB members who no longer hold the position or status that made them eligible to represent a specific sector on the LWDB must resign or be removed by the CLEO immediately as a representative of that entity. A resignation is not effective until it has been accepted by the CLEO.
3. Any changes to the membership of the LWDB must be reported to IWD within ten (10) business days from the date of the change. Notification shall include.
 - a. The name of the LWDB member
 - b. The nature of the change (addition, removal, etc.)
 - c. The organization represented
 - d. Job title
 - e. Category of inclusion (business, workforce, education & training, government/economic, community development, other)

G. VACANCIES

CEOs will ensure that LWDB vacancies are filled within sixty (60) business days from the time the vacancy was created, or a written request for a waiver has been completed and submitted to IWD.

H. MID-TERM APPOINTMENT

LWDB members replacing outgoing members mid-term will serve the remainder of the outgoing member's term.

I. REMOVAL

1. The CLEO will remove LWDB members in the event that any of the following occurs:
 - a. Documented violation of conflict of interest
 - b. Failure to meet LWDB member representation requirements, as defined in WIOA and in accordance with Local Board Membership Requirements
 - c. Documented proof of fraud and/or abuse
 - d. Intentional violation of the Iowa Open Meetings Act
 - e. Criminal behavior

- f. Other conduct detrimental to the LWDB
 - g. LWDB members may be removed for other factors outlined in the board bylaws
- 2. Recommendation for removal will be made on a case-by-case basis, depending on the facts of the situation.
- 3. The CLEO may appoint an independent entity to investigate the conduct of an LWDB member and report back on the findings.
- 4. The LWDB may recommend the removal of an LWDB member for the above violations to the CLEO by a vote in open session of no less than two-thirds (2/3) of the LWDB voting members. The reason for the recommendation must be given in the minutes of the meeting.
- 5. The CEOs of the EIWDA may recommend to the CLEO the removal of a member of the LWDB by a vote in open session of no less than two-thirds (2/3) of its members. The reason for the recommendation must be recorded in the minutes of the meeting.
- 6. As soon as practical, but not later than five (5) days after a recommendation for removal, the CLEO must notify the LWDB member and IWD in writing of the decision and reason for removal.

J. DESIGNATION OF LOCAL GRANT RECIPIENT/FISCAL AGENT

WIOA requires the CLEO to serve as the local grant recipient for all WIOA Title I funds unless CEOs designate an alternative entity to serve in this capacity. The local grant recipient enters into a grant relationship with the State on behalf of the CEOs. Under a majority decision, CEOs may also elect to authorize the local grant recipient to subcontract fiscal agent services to administer these funds. Even if CEOs designate a grant recipient and fiscal agent, they remain liable for any misused funds and for expenditures that are determined unallowable under WIOA. In accordance with the flexibility of CEOs under WIOA, the CEOs:

- 1. The CEO's process for selecting the Local grant recipient will consist of an in-depth analysis of the qualified organizations to perform the required roles and responsibilities outlined under WIOA. The local grant recipient will be selected by a majority vote of the CEOs. CEOs can base the selection on a variety of factors, including but not limited to cost, the organization's experience, staff availability and qualifications, and past performance for handling federal funds. The CEOs may select the local grant recipient through any means, including appointment as identified under WIOA or any type of procurement option approved by the CEOs.
- 2. The CEOs expect the local grant recipient to comply with all federal and state rules and regulations pertaining to the responsibilities of the grant recipient as defined under WIOA law, regulations, and State of Iowa policy.
- 3. The CEO's have designated the Local Workforce Development Board a 501(c)(3) nonprofit to serve as the Local Grant Recipient, and the LWDB is currently performing Fiscal Agent services in-house

4. A local grant recipient operates as a supporting organization to equip the local WDB to fulfill its rightful role by filling the gap that exists between the board's vision and executing strategy. In its role, the local grant recipient provides an administrative structure either in-house or by contracting out certain services to support the work of the board. The entity serving as the local grant recipient has several duties, both programmatic and fiscal in nature. They include, but are not limited to, the following:
 - a. Human resources management
 - b. Information technology support
 - c. Grant management
 - d. Fiscal and accounting operations
 - e. Executing contracts
 - f. Monitoring service providers and one-stop operators
 - g. Procuring services and contracts at the direction of the WDB.
 - h. Managing performance measures
 - i. Programmatic decision making
 - j. Adherence to program requirements
 - k. Fulfilling fiscal responsibilities, either directly or through a contracted fiscal agent. These responsibilities include:
 - i. Receive Funds
 - ii. Ensure sustained fiscal integrity and accountability for expenditures of funds in accordance with the Office of Management and Budget circulars, the Workforce Innovation and Opportunity Act, and the corresponding Federal Regulations and State policies
 - iii. Respond to audit financial findings
 - iv. Maintain proper accounting records and adequate documentation
 - v. Prepare financial reports
 - vi. Provide technical assistance to subrecipients regarding fiscal issues
 - vii. At the direction of the LWDB, the fiscal agent may also:
 - Procure contracts or obtain written agreements
 - Conduct financial monitoring on service providers and
 - Ensure independent audit of all employment and training programs
5. To fulfill our oversight responsibilities under WIOA, the CEOs shall receive from its designated local grant recipient the following information for review prior to each meeting:
 - a. Reports and other documents that summarize the current financial conditions of all WIOA grants awarded to EIWDA, including income, expenditures, fund balances, comparison to approved budget, and other financial metrics the CEOs may identify in conjunction with the execution of their responsibilities under this Agreement.
 - b. Reports and other documents that summarize known compliance issues or concerns, along with an explanation of any out-of-compliance notices received for any program for which the CEOs retain ultimate financial liability.

K. MISSPENT FUNDS OR DISALLOWED COSTS

1. The CEOs recognize that appointing a Local Grant Recipient does not absolve CEOs of their

collective liability for misspent WIOA funds. In the event WIOA expenditures are disallowed and CEOs are unsuccessful at obtaining repayment from the responsible entity, each county shall be responsible for a portion of any such liability. The apportionment will be divided proportionally between the twenty-two (22) counties of the Eastern Iowa Workforce Area based upon the population of each member county at the time the funds were misused or misspent, based on Labor Market Information (LMI) reports from Iowa Workforce Development. As of the date of this agreement, the proportionate share of each county is as follows:

County	Population	% of Total
Jackson	19,334	3.2%
Clinton	45,964	7.6%
Scott	175,308	28.9%
Muscatine	41,864	6.9%
Louisa	10,305	1.7%
Lee	32,307	5.3%
Henry	18,135	3.0%
Des Moines	38,275	6.3%
Appanoose	12,075	2.0%
Davis	9,213	1.5%
Hardin	16,161	2.7%
Jefferson	14,984	2.5%
Keokuk	9,976	1.6%
Lucas	8,837	1.5%
Mahaska	21,680	3.6%
Marshall	40,400	6.7%
Monroe	7,452	1.2%
Poweshiek	18,323	3.0%
Tama	16,613	2.7%
Van Buren	7,294	1.2%
Wapello	35,336	5.8%
Wayne	6,691	1.1%
Total	606,527	100.0%

2. The CEOs recognize that the required payment of disallowed costs must be made from non-federal funding sources.

L. CEO PARTNERSHIP WITH THE LOCAL WORKFORCE DEVELOPMENT BOARD

1. The CEOs and LWDB shall develop and submit a local plan to IWD that meets local workforce development needs and the requirements of WIOA. The completed local plan shall be approved by CEOs at a scheduled CEO meeting. The CEOs and LWDB must be in agreement on the local plan before the plan can be submitted to IWD. The local plan must be consistent with the state plan.

2. In partnership with the LWDB, the CEOs shall conduct oversight for WIOA Title I programs and the American Job Center (AJC) in the local area. They will ensure the appropriate use and management of the funds provided in the local area, and ensure the appropriate use and management, and investment of funds to maximize performance outcomes.
3. The LWDB, with the approval of the CEOs, shall designate a one-stop operator through a competitive process and may terminate for cause the eligibility of such operators pursuant to WIOA section 107(d)(10).
4. The LWDB shall develop a board budget, with approval from the CEOs. The LWDB shall develop a budget consistent with the local plan for its activities and submit the budget to the CEOs for their approval. The local grant recipient must distribute grant funds as approved by the CEOs, provided that the disbursement does not violate WIOA or any other applicable law.
5. The CEOs shall approve additional one-stop partners as deemed appropriate and necessary to provide quality services.
6. The LWDB, with approval from the CEOs, shall develop and enter into a Memorandum of Understanding (MOU) concerning the operation of the one-stop delivery system in the local area with the One-Stop Partners. The completed MOUs shall be subject to CEO approval and shall be reviewed and approved by the CEOs at scheduled meetings.

M. CONSULTATION WITH IOWA WORKFORCE DEVELOPMENT

1. The LWDB, the CEOs, and IWD shall negotiate and reach an agreement on local performance accountability measures.
2. The CEOs will consult with IWD in the development of a reorganization plan, following decertification of the LWDB for fraud, abuse, failure to carry out functions, or non-performance.
3. In conjunction with IWD, the CEOs will carry out statewide Rapid Response activities, including additional assistance to local service delivery areas that experience disasters, mass layoffs, or plant closings, or other events that precipitate substantial increases in the number of unemployed individuals.
4. The CEOs, in coordination with IWD and the LWDB, shall establish and operate a fiscal and management accountability information system.

N. Withdrawal

A county may withdraw from this Agreement subject to the requirements of this section and all applicable state and federal laws. A county intending to withdraw must provide written notice of its intent to the Chief Lead Elected Official (CLEO), the EIWDB Executive Director, and all other counties that are parties to this CEO Shared Liability Agreement. Written notice must be provided

at least 180 days before the intended withdrawal date. Withdrawal will become effective at the end of the current program year (June 30) following the expiration of the 180-day notice period.

1. Before the withdrawal becomes effective, the withdrawing county shall:
 - Fulfill all financial obligations, including shared liability costs, incurred under this Agreement through the end of the current program year (June 30) following the 180-day notice period.
 - Participate in CEO actions necessary to close out or transition duties.
 - Ensure the continuation of WIOA services for residents of the withdrawing county until the effective date of withdrawal.

Withdrawal does not relieve a county of its proportionate liability for obligations, findings, costs, or audit exceptions arising from its period of participation. The withdrawing county acknowledges that WIOA requires every county within a designated local area to participate in the CEO Shared Liability Agreement, and that a withdrawal will trigger a request to the Governor for re-designation of the county and/or reconfiguration of the local workforce area.

Following a county's withdrawal from this Agreement, the remaining counties shall make any necessary amendments to this Agreement, the MOU/IFA, and all related governance documents.

O. CEO DISPUTES

It is agreed that CEO decisions required under this Agreement shall be made in a democratic manner and that each CEO shall have an equal vote in all deliberations. A simple majority vote shall be required to approve or deny any action required to fulfill the CEO responsibilities covered by this Agreement.

P. AMENDMENTS

Any CEO may propose an amendment to this Agreement. No amendment shall take effect unless it is first approved by at least two-thirds (2/3) of the CEOs representing the EIWDA and is subsequently approved by each and every county through an official resolution by the boards of supervisors.

Q. SELECTION OF NEW CLEO

When a new CLEO is selected in accordance with the CEO Agreement, the newly selected CLEO must submit to the LWDB and IWD a written statement acknowledging that they have read, understand, and will comply with the current CEO Agreement, and will apprise IWD of the change in CLEO designation.

R. NEW ENTITY

No separate legal or administrative entity is being created because of this Agreement. Pursuant to Iowa Code 28E. The CEOs shall be responsible for administering this agreement and joint undertaking.

S. DURATION

This Agreement shall be effective upon the approval of the Board of Supervisors of each of the member counties. The Agreement shall continue until WIOA is rescinded or LWDB, as currently designated, is changed by the Governor or upon the CEOs request to amend this Agreement at any regularly scheduled meeting.

T. Signatures

By signing below, I acknowledge that I have read and agree to the Eastern Iowa Workforce Development Area (EIWDA) Chief Elected Official Shared Liability Agreement as amended at the September 29, 2025, CEO meeting. Multiple signature pages will constitute a fully executed Eastern Iowa Workforce Development Area CEO Shared Liability Agreement. Upon receipt of all signature pages, this Agreement will become effective and be filed with the Iowa Secretary of State.

Signature Page
Eastern Iowa Workforce Development Area
Chief Elected Officials Shared Liability Agreement

Signature		Date
_____	Appanoose County	_____
_____	Davis County	_____
_____	Hardin County	_____
_____	Jefferson County	_____
_____	Keokuk County	_____
_____	Lucas County	_____
_____	Mahaska County	_____
_____	Marshall County	_____
_____	Monroe County	_____
_____	Tama County	_____
_____	Poweshiek County	_____
_____	Van Buren County	_____
_____	Wapello County	_____
_____	Wayne County	_____
_____	Jackson County	_____
_____	Clinton County	_____
_____	Scott County	_____
_____	Muscatine County	_____
_____	Lee County	_____
_____	Louisa County	_____
_____	Des Moines County	_____
_____	Henry County	_____